

Are You Ready for a Different Kind of Elf?



Swords & Shapeshifters

**An Alternate Version of
Swords & Wizardry Continual Light**





Swords & Shapshifters

An Alternate Version of Swords & Wizardry Continual Light

by Fr. Dave • bloodofprokopius.blogspot.com

Illustrations by

Luigi Castellani • David Eynon • David Lewis Johnson

Joyce Maureira • Daniel F. Walthall

In 1983, TSR released a manual full of creatures in what it dubbed “the third in the series of . . . role-playing aids.” Inside were a collection of monsters that had previously appeared in various modules as well as several that supported the planar cosmology of Gary Gygax. This book poses the question, what if this collection of creatures was not the third, but the first? How different would FRPGs be and the worlds that they implied?

The result is familiar because we still have elves, dwarves and dragons, but these are not the elves, dwarves and dragons we have all become so familiar with. This is due to a number of themes suggested within the pages of TSR’s third installment of beasts which this book tries to present in a playable form.

There are three different broad categories of monsters: Elementals, Fey and Lost World. Within these broad categories is the theme of corruption. Gone is the normal demi-human/humanoid dichotomy. In its place is a world where the pursuit of arcane power has corrupted large swathes of the world resulting in dark fey, warped creatures of nature and beings trapped in unnatural forms.

This book is built upon the fundamental simplicity of Swords & Wizardry Continual Light. This simplicity allows for this reimagined FRPG universe to be easily made whole-cloth in a way other rule sets make difficult because of their relative complexity. Therefore I would like to thank Matt Finch, Zach Glazar, James M. Spahn and Erik “Tenkar” Steine for giving the world SWCL.

Step 1: Roll Attributes

Roll 3d6 (which results in a score of 3-18) for each attribute and note the results in pencil next to each ability on the Character Sheet. Any attribute that is 15 or higher has a +1 bonus.

Strength: Muscle and physical power. Fighters may add this bonus to all attack and damage rolls in melee.

Intelligence: Learning ability, memory and reason. Magic-users may apply this bonus as a penalty to any save made against their spells.

Wisdom: Willpower, common sense, perception and intuition. Clerics gain one extra 1st level spell with this bonus.

Constitution: Physical health and stamina. All characters add this bonus to each of their Hit Dice.

Dexterity: Agility, reflexes and hand-eye coordination. All characters may use this bonus “to-hit” in ranged combat and as a knob to their Armor Class.

Charisma: Personal magnetism and leadership. All characters with this bonus begin play with a Torchbearer (HD 1-1; AC 9[10]; Mv: 12).



Step 2: Choose a Race

Dwarves are hill and mountain fey known for their fighting prowess. Elves are forest fey who live in clans. Mongrelmen are hideous creatures seemingly pieced together from parts of fey, humanoids and monsters.

Dwarves may progress as Fighters or Thieves. Once per day, they may double their size along with all of their equipment. This transformation lasts 6 turns + 1 turn per level of the Dwarf. While grown, Dwarves do an extra 1d6 damage in melee and take half damage from all non-magical attacks.

Elves may progress as Fighters or Thieves. Once per day per level, an elf may transform in to a type of normal animal (chosen at character creation) and is representative of the character's clan. While in animal form, the character has the movement and abilities of the animal but retain their normal Hit Dice, Armor Class, hit points, attack throws, and saving throws.

Mongrelmen may progress as Fighters or Thieves. They live on the edges of civilization, hiding in plain sight because their appearance prevents them from full assimilation. Thus, they are gifted at hiding themselves and others in plain sight and therefore always have the Thief skill *Hide in Shadows* (if they progress as thieves they get a +1 to the roll at 1st level). Anyone within 10 feet of a Mongrelman also effectively has this skill (thieves get a +1 to their roll). Mongrelmen are also excellent mimics, able to perfectly imitate the sound of any animal or monster.

Humans: As the most diverse and adaptable of the races, humans may be any class but receive no other bonuses.

Step 3: Choose a Class

There are four basic classes which represent different sets of adventuring skills: Cleric, Fighter, Magic-user and Thief.

CLERIC				1ST LVL	2ND LVL	3RD LVL
LEVEL	HD	SAVE	BHB	SPELLS	SPELLS	SPELLS
1	1	14	+0	0	-	-
2	2	13	+0	1	-	-
3	3	12	+1	2	-	-
4	3+1	11	+1	2	1	-
5	4	10	+2	3	2	1
6	5	9	+2	4	3	1
7	6	8	+3	4	3	2

Cleric

An armored holy crusader.

Special Abilities: Clerics can cast Cleric Spells. Once each day they pray to prepare a number of spells as shown above. Once a

spell has been cast, they must pray again to prepare it. It is possible to prepare multiples of the same spell, if multiple "slots" are available. Clerics get +2 on saves vs. death and poisons. Clerics are only trained to wield



clubs, hammers, maces, flails and slings. They can also *Turn Undead* by rolling 3d6 and comparing the result to the table below.

If the roll is equal or higher than the number shown, all undead of listed HD within 30' flee for 3d6 rounds.

UNDEAD HIT DICE	1ST LVL CLERIC	2ND LVL CLERIC	3RD LVL CLERIC	4TH LVL CLERIC	5TH LVL CLERIC	6TH LVL CLERIC	7TH LVL CLERIC
1	10	7	4	3	3	3	3
2	13	10	7	4	3	3	3
3	15	13	10	7	4	3	3
4	17	15	13	10	7	4	3
5	-	17	15	13	10	7	4
6	-	-	17	15	13	10	7
7	-	-	-	17	15	13	10
8+	-	-	-	-	17	15	13

Fighter

A veteran of some kind of armed conflict trained to use weapons and armor.

FIGHTER			
LEVEL	HD	SAVE	BHB
1	1+1	16	+0
2	2	15	+1
3	3	14	+2
4	4	13	+3
5	5	12	+4
6	6	11	+5
7	7	10	+6

Special Abilities: Fighters can use any weapons, wear any armor, including shields. They get a number of attacks each round equal to their level against foes of 1 HD or less. They are also +1 on saves vs. death and poisons.



Magic-User

A student of the arcane art of magic that can cast spells.

Special Abilities: Magic-users can cast Magic-User Spells. They have a spell book with two 1st level spells in it. At first level, the players chooses one spell and the other is chosen by the referee. Once per day, a magic-user studies spells in this book to prepare a number of

spells as shown below. Once a spell has been cast, they must study the spell book again to prepare it. It is possible to prepare multiples of the same spell, if multiple “slots” are available. Magic-users can add new spells to their spell book from Scrolls found on adventures. They also get +2 on saves vs. magic. Magic-users are only trained to use daggers or staves in combat and cannot wear armor or use shields.

MAGIC-USER				1ST LVL	2ND LVL	3RD LVL	4TH LVL
LEVEL	HD	SAVE	BHB	SPELLS	SPELLS	SPELLS	SPELLS
1	1	15	+0	1	-	-	-
2	1+1	14	+0	2	-	-	-
3	2	13	+0	3	1	-	-
4	2+1	12	+0	3	2	-	-
5	3	11	+1	4	2	1	-
6	3+1	10	+1	4	2	2	-
7	4	9	+2	4	3	2	1

Thief

A jack-of-all trades, skillful opportunist and treasure hunter.

Special Abilities: When attacking a surprise foe, a thief may backstab to get a +4 bonus to hit and inflict double damage. In addition, thieves have the following chances to succeed at the following:

- 4-6 on 1d6 to hear noises behind closed doors.
- 3-6 on 1d6 to read unfamiliar languages.
- 2-6 on 1d6 to climb sheer surfaces without tools or rope.
- 5-6 on 1d6 to Find and Remove Traps, Open Locks, Hide in Shadows, Move Silently, or Pick Pockets.

At 3rd level, a thief gets a +1 on each of these rolls. At 5th level a thief receives a +2. A roll of ‘1’ always fails.

THIEF			
LEVEL	HD	SAVE	BHB
1	1	15	+0
2	2	14	+0
3	2+1	13	+1
4	3	12	+1
5	4	11	+2
6	4+1	10	+2
7	5	9	+3

Thieves may use any weapon, but are limited to leather armor and cannot use shields.



Step 4: Equip the Character

Each class begins with a certain set of gear:

Cleric: Mace or Hammer (1d6 dmg), Chain Armor and Shield.

Fighter: Battle Axe or Sword (1d6 dmg), Bow (1d6 dmg), Chain Armor and Shield

-OR-

Great Sword (1d6+1 dmg), Crossbow (1d6 dmg) and Chain Armor.

Magic-user: Staff (1d6 dmg) and 2 daggers (1d6-1 dmg).

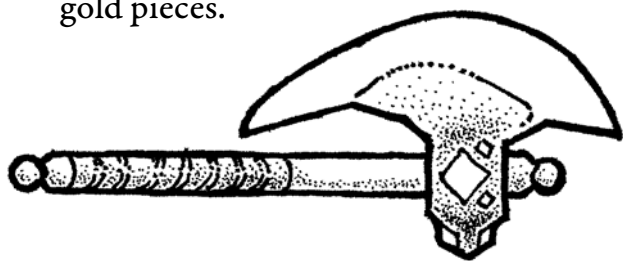
Thief: Sword (1d6 dmg), Dagger (1d6-1 dmg) and Leather Armor

-OR-

Dagger (1d6-1 dmg), Bow (1d6 dmg) and Leather Armor.

In addition, each player may choose one Adventuring Pack for their character.

- **Pack #1:** Backpack, bedroll, flint & steel, torches (6), 50' rope, crowbar, rations (7 days), water skin, 15 gold pieces.
- **Pack #2:** Backpack, bedroll, flint & steel, hooded lantern, 2 pints of oil, hammer, iron spikes (12), 10' pole, rations (7 days), water skin, 15 gold pieces.
- **Pack #3:** Backpack, extra backpack, iron spikes (12), bedroll, pack mule, rations (7 days), small hammer, water skin, 10 gold pieces.



Additional gear may be purchased:

MISSILE/THROWN WEAPONS

Weapon	Damage	Range	Cost
Bow	1d6	100 ft.	15gp
Crossbow	1d6+1	60 ft.	12gp
Dagger	1d6-1	10 ft.	2 gp
Sling	1d6-1	40 ft.	1 gp
Spear	1d6	20 ft.	1 gp

Ammunition is not tracked, therefore all ranged weapons are considered to come with the necessary ammunition.

MELEE WEAPONS

Weapon	Damage	Cost
Axe	1d6	5 gp
Club	1d6	0 gp
Dagger	1d6-1	2 gp
Mace	1d6	10 gp
Spear	1d6	1 gp
Staff (2-H)	1d6	0 gp
Sword	1d6	15 gp
Sword, Short	1d6-1	8 gp
Sword (2-H)	1d6+1	30 gp

Unarmed attacks inflict 1 hp damage with a successful attack.

ARMOR

Armor Type	AC Modifier	Cost
Leather	-2[+2]	5 gp
Ring	-3[+3]	30 gp
Chain	-4[+4]	75 gp
Plate	-6[+6]	100 gp
Shield	-1[+1]	15 gp

Modifiers from armor and shield are cumulative. A character can only wear a single set of armor and (if allowed by their class) a shield.



Adventuring Gear

Listed below are several commonly available items used by adventurers. The referee is encouraged to expand this list to suit their needs, using listed prices as a guide.

ITEM	COST
Backpack	3 gp
Bedroll	1 gp
Crowbar	2 gp
Flint & Steel	1 gp
Hooded Lantern	10 gp
Iron Spikes (12)	5 gp
Oil (1 pint)	1 gp
Pack Mule	5 gp
Rations (7 days)	15 gp
Rope (50')	3 gp
Small Hammer	1 gp
Ten Foot Pole	2 gp
Torches (6)	5 gp
Water skin	1 gp

Torches and lanterns both give off 30' of light.

Torches last 1 hour. A lantern lasts 4 hours, but burns through 1 pint of oil.

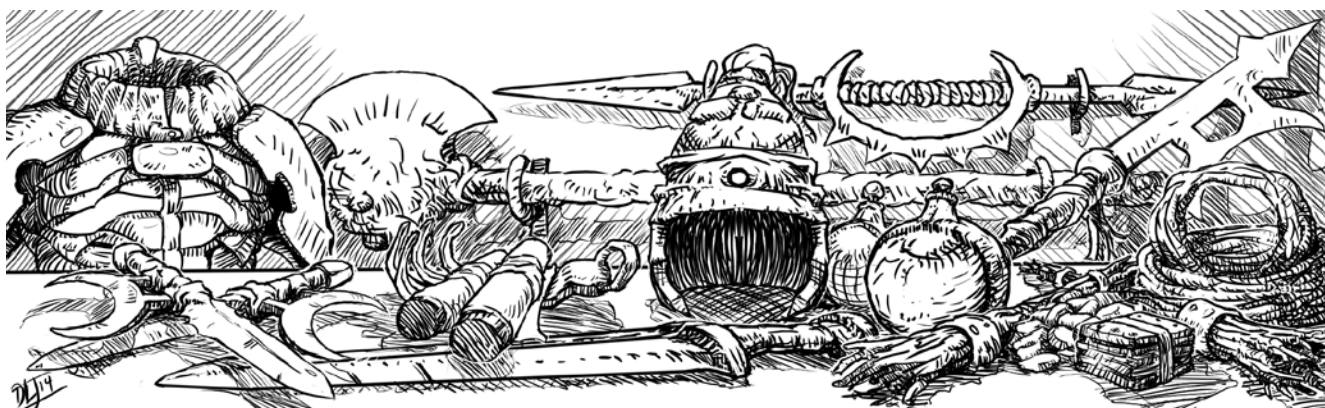
Optional Race

Changeling (Half-Elf)

The child of a human and fey couple, changelings are often referred to as half-elves because that is the most common pairing. The changeling adventures as either a human or an elf (or a dwarf, with the permission of the referee). Each persona has its own class and its own racial abilities. The player chooses which persona to play at the beginning of each session. For example, a half-elf could adventure as a human cleric in one persona and an elven thief in the other.

Like all other characters, the changeling can get a total of six level gains and each of these level gains requires the same number of adventures as other classes; however, the changeling can gain a maximum of three levels in each of their two classes. Thus, the half-elf cleric/thief in the example above can only advance to be a 4th level human cleric and a 4th level elven thief.

All class restrictions apply when adventuring in certain classes. Thus, when adventuring as a magic-user, a changeling cannot wear any armor. All HD gains are according to the class that the changeling gained a level in.



Optional Classes

Optional classes may be used with referee permission. Each functions very similar to one of the four standard classes. A non-human character can only be an optional class based on fighters or thieves.

Note: Optional classes take one extra adventure to level at each level.

Bard: Wandering performers and minstrels. Once per day, they may cast Charm Person and Detect Magic. Once per combat they may boost the morale of their allies, granting them +1 to all attack rolls for 5 rounds. Otherwise they function as thieves.

Bounty Hunter: Skilled killers. Once per day they may make a Death Attack which takes the place of a backstab. If successful, the target must make a save or die. Otherwise they function as thieves.

Druid: Clerics who focus more on nature than crusades. In a wilderness environment, they may track foes with a 3-6. A version of Charm Person, which only works on animals, is available to Druids as a 1st level spell. They can only wear leather armor, but otherwise function as Clerics.

Monk: a wandering mystic. They receive a -1 [+1] bonus to their AC per level. Their unarmed attacks do 1d6 damage +1 per level beyond 1st. Monks may not wear armor or use shields, but otherwise function as clerics.

Paladins: Holy warriors. They they may cast spells as if they were a cleric of one level lower. Otherwise, they function as fighters.

Rangers: Skilled woodsmen. They can track foes with a 3-6 on 1d6 chance of success in wilderness environments, or a 5-6 on 1d6 chance of success in dungeon or urban environments. They receive +1 to damage against Elementals, Fey or creatures of the Lost World (this bonus is chosen at character creation). They are limited to leather or chain armor but otherwise function as fighters.

Sage: Scholar of the arcane and esoteric. On a roll of 6 on a d6 a sage can learn an interesting fact about an object or person. For every day spent studying, the sage gets a +1 to the roll. A roll of '1' always means a failure. They can also learn and cast spells from the Cleric Spell List. Otherwise, they function as magic-users.

Swashbucklers: Dashing swordsmen. When wielding a melee weapon, they use the BHB of a fighter. Otherwise, they function as thieves.



Gaining Levels

Characters gain levels by going on adventures. The chart below shows the number of completed adventures needed to advance. The numbers in parenthesis show what optional classes need to advance. Characters begin at 1st level.

LEVEL	ADVENTURES NEEDED TO ADVANCE	TOTAL ADVENTURES
1	0	0
2	2(3)	2(3)
3	3(4)	5(7)
4	4(5)	9(12)
5	5(6)	14(18)
6	6(7)	20(25)
7	7(8)	27(33)

Optional Rules

- All characters start with maximum Hit Points for their class at 1st Level. This increases survivability.
- Re-roll Hit Points at the beginning of every adventure. This averages out bad rolls and can simulate both “good days” and “bad days.”
- Allow human characters to change their lowest ability score to 15. This encourages players to play humans instead of elves, dwarves or mongrelmen.
- Allow 1st Level Clerics to have ‘Zero’ 1st level spells so that they can start with a bonus spell if they have a Wisdom bonus.
- To advance in level, a character must spend at least half of their treasure gained from adventuring. This encourages player investment in the campaign world.

Character Improvement After 7th Level

Adventures after seventh level accrue credits (1 per adventure or referee choice). They may spend these credits to improve in the following ways:

- **1 Credit** - Add 1 hp to their hp total. This can be done a maximum of 10 times. Note, these are not HD and a Constitution Bonus does not apply. Also, see below.
- **2 Credits** - Lower Save by 1 point. This can be done a maximum of 5 times.
- **2 Credits** - Clerics and Magic-users may add 1 First Level spell slot. This can be done a maximum of 3 times.
- **3 Credits** - Fighters only can increase their BHB by 1. This can be done a maximum of 5 times.
- **4 Credits** - Clerics and Thieves can increase their BHB by 1. This can be done a maximum of 2 times.
- **4 Credits** - Clerics and Magic-users may add 1 Second Level spell slot. This can be done a maximum of 2 times.
- **5 Credits** - Thieves may add a +1 to their Thief Skills. This can only be done once.
- **5 Credits** - Add 1 hp to their hp total. There is no limit to the times this can be done. Note, these are not HD and a Constitution Bonus does not apply.
- **6 Credits** - Clerics and Magic-users may add 1 Third Level spell slot. This can only be done once.
- **8 Credits** - Magic-users may add 1 Fourth Level spell slot. This can only be done once.



When characters go on adventures, they will encounter hostile enemies. To find out what happens, use the following the order:

1. Determine Surprise. Unless one group is making a bunch of noise or calling attention to themselves, each side rolls a d6. On a 1-2 their side is surprised and does not get to act for one round. Note: Thieves who are actively trying to Hide in Shadows or Move Silently may roll against these skills to gain surprise even if their group doesn't get surprise.

2. Determine Initiative. Each side rolls 1d6. The highest roll gets initiative. When there is a tie, both sides act simultaneously.

3. Side with Initiative Acts. Each character or creature takes one action. One action can include moving and attacking or moving and casting a spell. Other possibilities are possible with the referee's permission. The results of all attacks and spells take effect.

4. Side without Initiative Acts. See step 3.

5. The Round Ends. If combat continues, go to Step 2 and repeat as necessary.

A melee attack happens when a hand-held weapon such as a sword, spear or dagger or a natural weapon such as a claw or a bite is used in combat. Two combatants are considered to be in melee combat when the are within 10 feet of each other.

Missile Attack

A missile attack happens when a ranged weapon such as a bow, crossbow or sling is used. When a ranged attack is made on combatants engaged in melee combat the target of the attack is determined randomly, whether friend or foe.

The Attack Roll

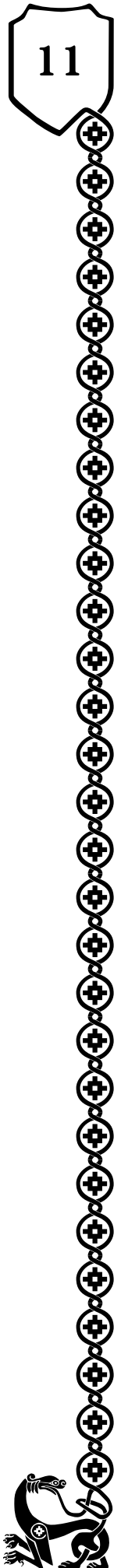
When attacking, a player rolls a d20 and adds any bonuses to the roll to get a result. That result is compared to the Armor Class of the target on the table below. If the result is equal to or higher than the roll necessary the attack roll is a hit. Monsters gain a bonus to their roll equal to their HD, with a minimum bonus of +1.

Armor Class	0[19]	1[18]	2[17]	3[16]	4[15]	5[14]	6[13]	7[12]	8[11]	9[10]
Attack Roll	19	18	17	16	15	14	13	12	11	10

Armor Class

Armor Class represents how difficult a target is to hit. It can be represented by two numbers X[XX]. When an armor class is represented by the first number, the lower the number, the harder to hit. This is called "Descending AC."

When an armor class is represented by the second number, the higher the number, the harder to hit. This number also correspond to the number needed on a d20 to hit the target. This is called "Ascending AC."



Damage and Death

On a successful hit, damage is rolled according to the weapon used. For example, a dagger does 1d6-1 damage. The result of this roll is deducted from the opponent's hit points (hp). When hp reach zero, the target dies.

Healing

Without a magical means of restoring hit points, a character will naturally recover 1 hit point per day of uninterrupted rest.

Save

Various events in an adventure, such as a spell, traps, or other hazards, may require characters to make a Save. Every class has a Save target number depending on level. A roll on a d20 that is equal to or higher than the number means the character avoids or lessens the intended effect of the event.

The target number for a Monster Save is calculated by subtracting their HD from 19.

Time & Movement

Time is represented by Turns and Rounds. A turn simulates ten minutes and a round one minute. Thus, there are ten rounds in a turn.

Movement measures the number of feet someone can move in a round.

Base Move = movement in combat

Base Move x 10 = normal walking movement

Base Move x 5 = cautious movement (looking for traps, hazards, etc.)

Base Move x 20 = running movement

Humans, elves and mongrelmen have a base move of 12. Dwarves have a base move of 9.

Magic Spells

As an action, Clerics and Magic-Users may cast any spell they have prepared. A spell's range is the maximum reach of the spell when it is cast. A spell's duration determines how long its effect lasts.

Cleric Spells

1st Level Cleric Spells

Cure Wounds I

Range: Touch Duration: Instant.
Restore 1d6+1 hit points to a single target.

Detect Good or Evil

Range: 120 ft Duration 1 hour.
The cleric can detect good or evil creatures, enchantments, and auras.

Spiritual Protection

Range: Caster Duration: 2 hours.
Anyone attacking the caster suffers a -1 penalty to hit and the caster receives a +1 to all Saves.

Bless

Range: 60 ft Duration: 5 rounds.
All allies within range receive a +1 to all to hit and Saves.

2nd Level Cleric Spells

Find Traps

Range: 30 ft Duration: 2 turns.
Caster automatically detects any magical or mundane traps in range.



Hold Person

Range: 180 ft Duration: 9 turns.

A single target cannot move or act, but may make a Save each round to break effect.

Silence

Range: 180 ft Duration: 12 turns.

No sound can be heard in an area of 15 cubic feet. This prevents spell casting.

Speak with Animals

Range: Caster Duration: 6 turns.

The caster can speak with animals, but not monsters.

3rd Level Cleric Spells

Cure Condition

Range: Touch Duration: Instant.

Cure target of being poisoned, diseased, or cursed.

Cure Wounds II

Range: Touch Duration: Instant.

Restore 3d6+3 hit points to a single target.

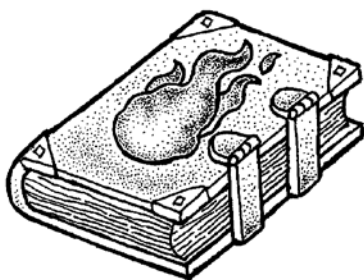
Magic-user Spells

1st Level Magic-User Spells

Armor

Range: Caster Duration: 6 hours.

Caster gains a -4 [+4] bonus to AC.



Charm Person

Range 30 ft Duration: 1 day.

A single humanoid target of normal size regards the caster as a friend unless they make a successful save or are betrayed.

Detect Magic

Range 60 ft Duration 2 turns.

Caster can perceive the presence of magic.

Light

Range 120 ft Duration: 2 hours.

The target of this spell produces light as a torch.

Magic Missile

Range: 250 ft Duration: Instant.

A magic dart unerringly strikes a single target for 1d6 damage.

Read Language

Range: Caster Duration: 8 hours.

Read any non-magical text.

Sleep

Range 240 ft Duration: 1d6 hours.

A total of 2d6+3 HD of enemies fall asleep, but no single creature of 4HD or more can be affected.

2nd Level Magic-User Spells

Arcane Ward

Range: Touch Duration: Instant.

A single door, gate, or portal can be opened or locked. Locks both mundane and magical are unlocked and vice versa.



Illusion

Range: 120 ft Duration: 3 turns.

Create an intangible image capable of nonverbal sounds and simple movement. Viewers may make a Save to see through it.

Invisibility

Range: Touch Duration: See below.

The target of this spell (which can be the caster) becomes invisible and cannot be seen. They can only be attacked if their general location is known and attackers suffer a -4 penalty to hit. This enchantment ends if the target attacks, casts a spell, or acts aggressively.

Strength

Range: Touch Duration: 12 turns.

Target gains cyclops-like strength, adding +3 to all melee damage rolls.

Web

Range: 30 ft Duration: 8 hours.

Sticky webs fill an area up to 10 x 10 x 20 feet. It takes one turn to burn or hack through them. Crossing them without doing so takes 3 turns.

3rd Level Magic-User Spells

Dispel Magic

Range: 60 ft Duration: Permanent.

Dispel an active spell. Particularly strong spells may make a Save to resist, at the referee's discretion.

Fireball

Range: 240 ft Duration: Instant.

A ball of fire explodes, filling a radius of 20 feet and inflicting 5d6 damage on all in that area. Victims may make a Save to take half damage.

Fly

Range: Touch Duration: 1 hour.

Target can fly at their normal speed.

Summon Monster

Range: 60 ft Duration: 6 rounds.

Three 1 HD monsters appear and serve the caster faith fully.

4th Level Magic-User Spells

Dimension Door

Range: 360 ft Duration: Instant. The caster can teleport to any distance that is visible up to the spell's range.

Ice Storm

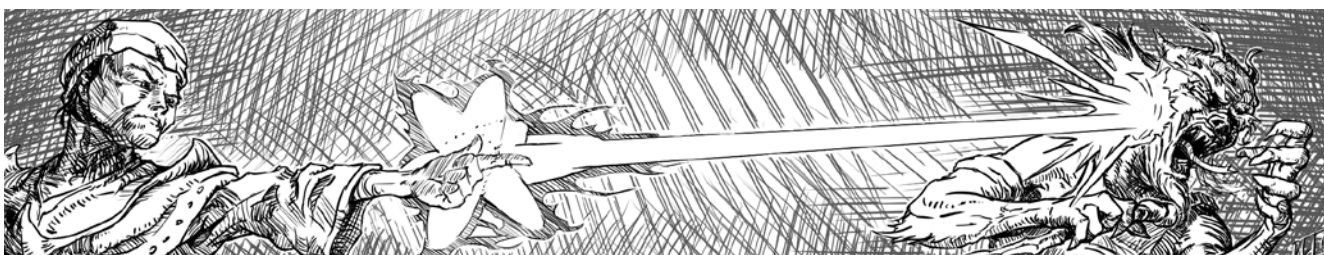
Range: 600 ft Duration: 5 rounds.

Frozen hail fills an area 30 feet in radius, inflicting 3d6 damage on all in that area each round and reducing movement by half. No Save is allowed.

Wizard Eye

Range: 240 ft Duration: 1 hour.

Caster conjures an invisible eye they can see through and can fly up to 240 ft from them.



The bulk of adventures will take place in dungeons, which are dangerous locations such as abandoned castles, monster hideouts, and dragon's lairs. The contents of each room in a dungeon are determined by the referee or the author of a pre-designed adventure. Most rooms will be keyed and described with any important information. Dungeon rooms typically contain monsters, treasure and/or traps or nothing at all. Seeing in a dungeon usually requires a light source, such as a torch or Light spell. Blind characters suffer a -4 penalty on all "to-hit" rolls and Saves.

Traps

Traps are mechanical and/or magical hazards such as pit traps, poison needles, or magical wards concealed in a dungeon or attached to an object in a dungeon. When a character triggers a trap they must make a Save or suffer the effects (some examples are listed below). Thieves can use their *Find and Remove Traps* special ability to detect and disarm traps. If the trap is magical, the thief suffers a -1 penalty to the roll. Once a referee has determined whether a trap is magical or not, they can then decide whether the trap is Common, Dangerous, Lethal, or Deadly or come up with some other effect.

- **Common Trap:** The character suffers 1d6 points of damage, Save for half.
- **Dangerous Trap:** The character suffers 3d6 points of damage, Save for half.
- **Lethal Trap:** The character suffers 5d6 points of damage, Save for half.
- **Deadly Trap:** If the character fails their Save they die. Otherwise, no damage.

Monsters are adversaries player characters will face in battle on their adventures. Some monsters will have Special abilities.

- **Aquatic:** Monster can swim at twice its listed Move and breathe water.
- **Burrowing:** Monster can move through solid rock at half its listed Move.
- **Climbing:** Monster can move up and down sheer surfaces at its listed Move.
- **Entangle:** Monster has an attack that simulates the *Hold Person* spell.
- **Flight:** Monster may naturally fly, traveling at twice its listed Move when airborne.
- **Immune to Normal Weapons:** Monster can only be damaged by spells and magic weapons.
- **Magic Resistant:** Monster has +4 to all saves against spells.
- **Nausea:** Monster has an attack which prevents victim from acting at all for the duration of this effect.
- **Poison:** Monster has a special attack which injects a poison, requiring victim to Save or suffer the effects.
- **Slam:** Monster can knock a victim prone with an attack unless they make a Save. Prone victims must spend next round getting up or take an AC penalty of +2[-2] until they can stop being prone.
- **Spellcasting:** Monsters can cast or mimic Cleric or Magic-User spells. This will be listed in the stat block.
- **Undead:** Monster can be Turned by a Cleric, but is immune to *Charm Person*, *Sleep*, and *Illusion* spells.



Azer

AC: 2[17] HD: 2+1

Attacks: +2, weapon (1d6) Move: 12

Special: All attacks do +1 fire damage; immune to fire

Dwarf-like humanoids that are elemental beings of bronze and fire.

Burrow Thug

AC: 2[17] HD: 1

Attacks: +1, claws (1d3x2) Move: 9

Special: Surprise on 1-4 on a d6; Burrowing
Elemental stone creatures that resemble a humanoid praying mantis.

Demon

AC: 0[19] HD: 12

Attacks: +12, flaming sword (2d6) Move: 12

Special: Flying, Magic Resistant; Immune to Normal Weapons; Spellcasting

Utterly corrupt elemental being who delight in suffering. Can cast spells as a 5th level magic-user..

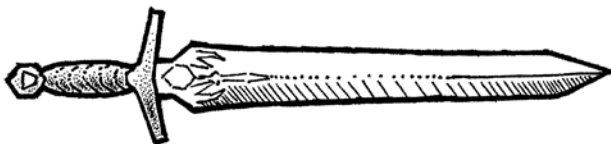
Dragon

AC: 2[17] HD: 9

Attacks: +9, bite (2d6x2) Move: 12

Special: Flying; Can breathe Ice Storm once per day; Spellcasting.

These elemental beings of air rarely descend to earth except to wreck havoc. They can cast spells as a 3rd level magic-user.



Elemental

These are pure elemental creatures, usually summoned and corrupted by dark magics. With a successful attack, a victim is Entangled in the elemental forces of the creature, which can include electricity, flame, lava, liquid, mud, rock, snow and wind. They come in three sizes:

Small

AC: 6[13] HD: 2

Attacks: +2, claw (1d2) Move: 60

Special: Entangle; Immune to Normal Weapons

Medium

AC: 5[14] HD: 4

Attacks: +4, claw (1d6-1) Move: 60

Special: Entangle; Immune to Normal Weapons

Large

AC: 4[15] HD: 6

Attacks: +6, claw (1d6) Move: 60

Special: Entangle; Immune to Normal Weapons

Magmin

AC: 6[13] HD: 1/2

Attacks: +1, bite (1d2) Move: 12

Special: Burrowing; Can cast Fireball once per day; Immune to fire; Half-damage from Normal Weapons; Double-damage from cold attacks.

Magmins are small, human-shaped elemental beings of fire that radiate intense heat and are wreathed in an aura of searing flames.



Pyrobat

AC: 7[14] HD: 2

Attacks: +2, bite (1d2) Move: 9

Special: Flying; Fire Damage

Pyrobats are elemental creatures that resemble normal bats encased in a red flame. Anyone in melee with pyrobats must make a Save or take 1d6 hp of fire damage.

Rockling

AC: 4[15] HD: 1/2

Attacks: +1, bite (1d6-1) Move: 12

Special: Slam; Surprise on a 1-3 on a d6;

Cannot be surprised

These elemental beings are semi-sentient rocks.

Sandling

AC: 3[16] HD: 4

Attacks: +4, bite (1d6) Move: 12

Special: Burrowing; Half-damage from

Normal Weapons; Vulnerable to water

These elemental creatures look like giant snakes made out of sand. Every 2 gallons go water that hit a sandling act like a Hold Person spell.

Smoke Rat

AC: 6[13] HD: 1/2

Attacks: +1, bite (1d2) Move: 12

Special: Nausea, Gaseous form

These all-black monstrous rats can assume a gaseous form once a day. When killed, they explode into a smoky cloud with a 10ft. radius. Anyone inside must make a save or be rendered helpless with nausea for 1d6 turns.



Fey

Atomie

AC: 4[15] HD: 1/2

Attacks: +1, weapons (1d2x2) Move: 12

Special: Flying; Spellcasting *Invisibility* at will.

Small, elf-like fey with green skin. They are very territorial.

Cooshee

AC: 5[14] HD: 3+3

Attacks: +4, bite (1d6) Move: 12

Special: Slam; Magic Resistant

Cooshees are large, 200-pound, 4-foot tall hounds with green and brown spotted fur, a long, curling tail and ears that taper to points. They only bark to warn their allies, but these barks can be heard a mile away.

Derro

AC: 4[15] HD: 3

Attacks: +3, weapon (1d6) Move: 9

Special: Spellcasting *Arcane Ward* and *Illusion* at will

These cruel creatures are dwarves twisted by their pursuit of arcane magic.

Elf, Feral

AC: 3[16] HD: 3

Attacks: +3, weapon (1d6) Move: 15

Special: Shape shift; Spellcasting *Sleep*;

Immune to Normal Weapons except Iron

These wild elves have lost themselves to their animal form and now hunt humanoids. They can shape shift between an animal form, an elf form and a form half-way between an animal and elf.



Fey Cat

AC: 4[13] HD: 4

Attacks: +4, claws (1d2x2) Move: 18

Special: Surprise on a 1-5 on a d6; Grow

These fey creatures are about the size of a dog with grey fur and black stripes. Like Dwarves, they can grow twice their size, do an extra 1d6 damage and take half-damage from non-magical attacks.

Firefly, Giant

AC: 4[15] HD: 2

Attacks: +2, bite (1d2) Move: 6

Special: Flying; Spellcasting *Light* at will, *Fireball* once per day.

Intelligent, fey creatures that resemble fireflies. Their Light spells are always cast on their abdomens.

Grig

AC: 2[17] HD: 1/2

Attacks: +1, weapon (1d4) Move: 18

Special: Spellcasting *Illusion* at will.

These fey have light blue skin, forest-green hair, and brown cricket-like legs.

Grippli

AC: 6[13] HD: 1+1

Attacks: +2, small weapon (1d3) Move: 12

Special: Climbing

Short, bipedal tree frog-like fey.

Hintaur

AC: 7[12] HD: 1-1

Attacks: +1, weapon (1d3) Move: 12

Special: Poison

Hintaurs are a centaur-like fey that resemble a cross between an elf and an antelope, but stand only 3' tall. They like to use poisoned arrows.

Ylf

AC: 5[14] HD: 1+1

Attacks: +2, weapon (1d6) Move: 12

Special: Spellcasting

Elves who have abandoned their clans and shape shifting abilities in pursuit of arcane power. They can cast any one 1st level magic-user spell.

Lost World

Cyclops

AC: 3[14] HD: 5

Attacks: +5, weapon (1d6+3) Move: 12

Special: -2 to hit when using missile weapons

Giant humanoids with a single, red eye.

Dinosaur

AC: 4[15] HD: 8

Attacks: +8, bite (2d6) Move: 9

Special: May have Aquatic or Flying

A reptilian prehistoric carnivore.



Mandragora

AC: 5[14] HD: 1+1

Attacks: +2, tendrils (1d3x2) Move: 12

Special: Burrowing; Entangle; Stunned for 1 round by bright lights

Vaguely humanoid plant creature that relishes the taste of human flesh. A successful hit means they have Entangled their victim.

Migmen

AC: 6[13] HD: 1

Attacks: +1, weapon (1d6) Move: 9

Special: Entangle

Migmen are magically altered mongrelmen, who look like small green apes with flat heads and bulbous cat-like eyes. Migmen like to use nets which they use to Entangle their victims.

Necromancer

AC: 5[14] HD: 4

Attacks: +4, weapon (1d6) Move: 12

Special: Spellcasting, Control Undead

Mongrelmen twisted by their pursuit of arcane power. They can cast spells as a 7th-level magic-user and can Banish Undead like a 7th-level cleric. They gain control of any banished undead.

Ophidian

AC: 4[15] HD: 3

Attacks: +3, weapon or bite (1d6) Move: 9

Special: Poison

An ancient snake-like race with humanoid torsos and serpentine tail where there would be legs. The poison of an ophidian's bite will cause the victim to transform into an ophidian in 1d4 weeks. This transformation can be stopped with a *Cure Condition* spell.

Pedipalp

AC: 3[16] HD: 2

Attacks: +2, claws (1d3x2) bite (1d6-1)

Move: 12

Special: Nausea

A strange cross between a spider and a scorpion that is about 5 ft. long. Rare individuals can create a nauseous 10 ft. cloud.

Skeleton

Bones of the dead animated by dark magics. They come in three varieties:

Animal

AC: 8[11] HD: 1-1

Attacks: +1, claw (1d3) Move: 6

Special: Undead

Humanoid

AC: 7[12] HD: 1+1

Attacks: +2, claw (1d4) Move: 6

Special: Undead

Monster

AC: 6[13] HD: 3

Attacks: +3, claw (1d6) Move: 6

Special: Undead

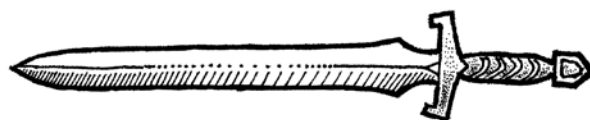
Vulchling

AC: 6[13] HD: 1

Attacks: +1, weapon (1d6+1) Move: 6

Special: Flying, Tracking

A race of humanoids that look more like vultures than men. They are excellent trackers and can follow a trail with a 4-6 on a d6.



Zombie

Shambling corpses animated by dark magics. They come in three varieties:

Animal

AC: 8[11] HD: 2

Attacks: +2, weapon (1d6) Move: 9

Special: Undead; Magic Resistant

Humanoid

AC: 6[13] HD: 4

Attacks: +4, weapon (1d6) Move: 9

Special: Undead; Magic Resistant

Monster

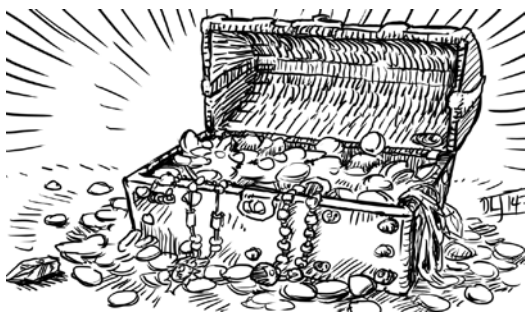
AC: 6[13] HD: 6

Attacks: +6, claw (1d6+2) Move: 9

Special: Undead; Magic Resistant

Treasure and Magical Rewards

During an adventure, it is likely that the player characters will recover some treasure both mundane and magical. As a general guideline, most monsters carry valuables based on their HD as seen in the chart below. Although the values use gold pieces as a unit, the treasure may take the form of silver, copper, jewelry, gems or other valuables. In addition to monetary treasure, there might a magic item. A roll of '20' on a d20 indicates that a magic item of the referee's choice is amongst the treasure.



MONSTER HD	TOTAL VALUE OF TREASURE
1HD or less	1d6 gold pieces
1+1HD-2HD	3d6 gold pieces
2+1HD-4HD	6d6 gold pieces
4+1HD-6HD	1d6x10 gold pieces
6+1HD-8HD	1d6x25 gold pieces
8+1HD-10HD	1d6x100 gold pieces
10+1 or greater	1d6x250 gold pieces

1 gp = 10 sp = 100 cp

Magical Items

Magic items fall into four broad categories.

Consumables are items that once used, are expended.

- *Potion of Fey Growth*: +1d6 to melee damage and half-damage from non-magical attacks for one hour.
- *Potion of Healing*: Heal 1d6+1hp.
- *Potion of Heroism*: +2 bonus to AC, to-hit and damage rolls for one hour.
- *Potion of Flying*: Gain the ability to Fly at twice normal speed for 1 hour.
- *Potion of Speed*: Double movement rate and attack twice per round for 5 rounds.

Potions can be used by anyone. Drinking a potion during combat takes an entire action.

- *Spell Scroll*: One randomly determined Cleric or Magic-User spell is written on the scroll.

Scrolls can be used by their respective classes to cast the inscribed spell without having it prepared. Instead of casting, Magic-Users may expend the scroll to inscribe it in their spell book to be prepared and cast later.



Weapons give a bonus in combat for “to hit” rolls and damage rolls according to their rank. Magical weapons are ranked as +1, +2, or +3. This rank can be given to any melee, missile or thrown weapon.

Armor provides a +1 bonus to the wearer’s armor class on top of the armor’s normal bonus. Any type of armor or shield can be magical.

Miscellaneous Items have various effects as defined below.

- *Bag of Holding*: A small belt pouch capable of holding up to 100 lbs.
- *Book of Heroes*: When read, one random attribute is increased by 1, then the book vanishes.
- *Boots of Silence*: Wearer is perfectly silent when moving.
- *Climber’s Rope*: A 100’ long rope that can hold 500 lbs. and can be commanded to knot itself.
- *Endless Torch*: Radiates a non-flammable fire that never goes out, even under water.

- *Goggles of Dark Sight*: Wearer can see perfectly in real or magical darkness.
- *Healer’s Staff*: Usable only by Clerics. Cast Cure Wounds I three times per day.
- *Luckstone*: Bearer gets +1 to all Saves.
- *Magic Wand*: Cast one 1st level magic-user spell (chosen by referee), 3 times per day.
- *Protective Item +1*: Either a ring, cloak, or bracer. Grants a +1 bonus to AC and Saves.
- *Ring of Invisibility*: Wearer can cast Invisibility on self once per day.
- *Ring of Fire Immunity*: Wearer suffers no damage from heat or fire even if magical.
- *Treasure Hunter’s Tools*: Usable only by Thieves. +1 to all d6 skills.
- *Warrior’s Horn*: Usable only by Fighters. Once per day, fighter can summon 1d6 1st level loyal fighter allies who remain 5 rounds.
- *Wizard’s Staff*: Usable only by Magic-users. Detect Magic at will, prepare 1 extra 1st level spell per day.



AC: Armor Class. Represents how difficult a character is to hit. The bracketed number is the total of an attack roll, after all modifiers, necessary for a target to be struck by an attack.

Attack Roll: The total of a d20, plus any applicable modifiers. Used to determine whether an attack is successful. Also called a “to-hit” roll.

BHB: Base Hit Bonus. Added to all attack or to-hit rolls.

Cleric Spell: A magical, holy effect available only to Clerics.

Level: Typically this is a measure of a character’s experience and general prowess. When referencing spells it reflects a spell’s complexity.

d20 or d6: Refers to what type of die to roll. d20 is a 20-sided die. d6 is a six sided die or 6-sided die. A d20+2 would be the result of a 20-sided die plus two. d6-1 would be the result of a six sided die minus 1.

Damage: The amount to be subtracted from a target’s hit points when they are successfully attacked or affected by some spells.

Hit Dice (HD): Always a d6. HD 1+1 means 1d6+1. Total of all rolled HD determines a character or monster’s Hit Points.

hp: Hit Points. Represents a character’s current health. When reduced to 0, that character or monster is dead.

Magic-User Spell: A magical effect available only to Magic-Users.

Melee: Any hand-to-hand attack, whether armed or not. Target must be adjacent to, or within 10’ of attacker.

Missile: Any projectile weapon, whether shot or thrown. Target must be within listed range of missile weapon.

Move: How quickly a character can travel. Sometimes called movement or movement rate.

Round: 1 minute. Combat is measured in rounds.

Save: A character’s ability to avoid danger. Roll a d20, plus any applicable modifiers. Equal to or above Save is a success.

Total Adventures: The number of adventures a character has completed. Used as a measure on how a character gains levels.

Turn: 10 minutes. Many spells have their duration in turns.



A Note About Using Published Adventures

There are many adventures written for games like *Swords & Shapeshifters*; however, S&S uses a slightly different standard than most of these works. Some conversion will be needed, but is a snap with these basic guidelines:

Armor Class(AC) remains unchanged.

S&S defaults to a d6 for HD and basic weapon damage whereas adventures default to a d8. Therefore, do the following:

HD/Hit Points: Decrease the hp of published monsters by 1 hp per HD.

Damage Rolls: Convert the dice used in published adventures to the d6 standard using the following table:

ADVENTURE DIE	D6 STANDARD
1d12	1d6+2
1d10	1d6+1
1d8	1d6
1d6	1d6-1
1d4	1d3
1d3	1d2



Open Game Content may only be Used under and in terms of the Open Game License (OGL).

This entire work is designated as Open Game Content under the OGL, with the exception of the trademarks “Swords & Wizardry,” “S&W,” and “Mythmere Games,” and with the exception of all artwork. These trademarks, and the Trade Dress of this work (font, layout, style of artwork, etc.) are reserved as Product Identity.

Open Game License

OPEN GAME LICENSE Version 1.0a

The following text is the property of Wizards of the Coast, Inc. and is Copyright 2000 Wizards of the Coast, Inc (“Wizards”). All Rights Reserved.

The following text is the property of Wizards of the Coast, Inc. and is Copyright 2000 Wizards of the Coast, Inc (“Wizards”). All Rights Reserved.

1. Definitions: (a) “Contributors” means the copyright and/or trademark owners who have contributed Open Game Content; (b) “Derivative Material” means copyrighted material including derivative works and translations (including into other computer languages), potation, modification, correction, addition, extension, upgrade, improvement, compilation, abridgment or other form in which an existing work may be recast, transformed or adapted; (c) “Distribute” means to reproduce, license, rent, lease, sell, broadcast, publicly display, transmit or otherwise distribute; (d) “Open Game Content” means the game mechanic and includes the methods, procedures, processes and routines to the extent such content does not embody the Product Identity and is an enhancement over the prior art and any additional content clearly identified as Open Game Content by the Contributor, and means any work covered by this License, including translations and derivative works under copyright law, but specifically excludes Product Identity. (e) “Product Identity” means product and product line names, logos and identifying marks including trade dress; artifacts; creatures characters; stories, storylines, plots, thematic elements, dialogue, incidents, language, artwork, symbols, designs, depictions, likenesses, formats, poses, concepts, themes and graphic, photographic and other visual or audio representations; names and descriptions of characters, spells, enchantments, personalities, teams, personas, likenesses and special abilities; places, locations, environments, creatures, equipment, magical or supernatural abilities or effects, logos, symbols, or graphic designs; and any other trademark or registered trademark clearly identified as Product identity by the owner of the Product Identity, and which specifically excludes the Open Game Content; (f) “Trademark” means the logos, names, mark, sign, motto, designs that are used by a Contributor to identify itself or its products or the associated products contributed to the Open Game License by the Contributor (g) “Use”, “Used” or “Using” means to use, Distribute, copy, edit, format, modify, translate and otherwise create Derivative Material of Open Game Content. (h) “You” or “Your” means the licensee in terms of this agreement.

2. The License: This License applies to any Open Game Content that contains a notice indicating that the Open Game Content may only be Used under and in terms of this License. You must affix such a notice to any Open Game Content that you Use. No terms may be added to or subtracted from this License except as described by the License itself. No other terms or conditions may be applied to any Open Game Content distributed using this License.

3. Offer and Acceptance: By Using the Open Game Content You indicate Your acceptance of the terms of this License.

4. Grant and Consideration: In consideration for agreeing to use this License, the Contributors grant You a perpetual, worldwide, royalty-free, non-exclusive license with the exact terms of this License to Use, the Open Game Content.

5. Representation of Authority to Contribute: If You are contributing original material as Open Game Content, You represent that Your Contributions are Your original creation and/or You have sufficient rights to grant the rights conveyed by this License. 6. Notice of License Copyright: You must update the COPYRIGHT NOTICE portion of this License to include the exact text of the COPYRIGHT NOTICE of any Open Game Content You are copying, modifying or distributing, and You must add the title, the copyright date, and the copyright holder’s name to the COPYRIGHT NOTICE of any original Open Game Content you Distribute.

7. Use of Product Identity: You agree not to Use any Product Identity, including as an indication as to compatibility, except as expressly licensed in another, independent Agreement with the owner of each element of that Product Identity. You agree not to indicate compatibility or co-adaptability with any Trademark

or Registered Trademark in conjunction with a work containing Open Game Content except as expressly licensed in another, independent Agreement with the owner of such Trademark or Registered Trademark. The use of any Product Identity in Open Game Content does not constitute a challenge to the ownership of that Product Identity. The owner of any Product Identity used in Open Game Content shall retain all rights, title and interest in and to that Product Identity.

8. Identification: If you distribute Open Game Content You must clearly indicate which portions of the work that you are distributing are Open Game Content.

9. Updating the License: Wizards or its designated Agents may publish updated versions of this License. You may use any authorized version of this License to copy, modify and distribute any Open Game Content originally distributed under any version of this License.

10. Copy of this License: You MUST include a copy of this License with every copy of the Open Game Content You Distribute.

11. Use of Contributor Credits: You may not market or advertise the Open Game Content using the name of any Contributor unless You have written permission from the Contributor to do so. 12. Inability to Comply: If it is impossible for You to comply with any of the terms of this License with respect to some or all of the Open Game Content due to statute, judicial order, or governmental regulation then You may not Use any Open Game Material so affected.

13. Termination: This License will terminate automatically if You fail to comply with all terms herein and fail to cure such breach within 30 days of becoming aware of the breach. All sublicenses shall survive the termination of this License.

14. Reformation: If any provision of this License is held to be unenforceable, such provision shall be reformed only to the extent necessary to make it enforceable.

15. COPYRIGHT NOTICE

Open Game License v 1.0a Copyright 2000, Wizards of the Coast, Inc.

System Reference Document Copyright 2000-2003, Wizards of the Coast, Inc.; Authors Jonathan Tweet, Monte Cook, Skip Williams, Rich Baker, Andy Collins, David Noonan, Rich Redman, Bruce R. Cordell, John D. Rateliff, Thomas Reid, James Wyatt, based on original material by E. Gary Gygax and Dave Arneson.

Atomie from the Tome of Horrors Complete, Copyright 2011, Necromancer Games, Inc., published and distributed by Frog God Games; Author Scott Greene, based on original material by Gary Gygax.

Cooshee from the Tome of Horrors Complete, Copyright 2011, Necromancer Games, Inc., published and distributed by Frog God Games; Author Scott Greene, based on original material by Gary Gygax.

Grippli from the Tome of Horrors Complete, Copyright 2011, Necromancer Games, Inc., published and distributed by Frog God Games; Author Scott Greene, based on original material by Gary Gygax.

Mandragora from the Tome of Horrors Complete, Copyright 2011, Necromancer Games, Inc., published and distributed by Frog God Games; Author Scott Greene, based on original material by Gary Gygax.

Mongrelman from the Tome of Horrors Complete, Copyright 2011, Necromancer Games, Inc., published and distributed by Frog God Games; Author Scott Greene, based on original material by Gary Gygax.

False Spider, Giant (Pedipalp) from the Tome of Horrors Complete, Copyright 2011, Necromancer Games, Inc., published and distributed by Frog God Games; Author Scott Greene, based on original material by Gary Gygax.

Tome of Horrors Complete, Copyright 2011, Necromancer Games, Inc., published and distributed by Frog God Games; Authors Scott Greene and Erica Balsley. Lair encounter authors John Stater, Jeff Harkness, Gary Schotter. Additional authors Kevin Basse, Casey Christofferson, Jim Collura, Meghan Greene, Lance Hawvermale, Travis Hawvermale, Ian S. Johnston, Nill Kenower, Patrick Lawringer, Nathan Paul, Clark Peterson, Greg Ragland, Robert Schwalb, Greg A. Vaughan, Bill Webb.

Swords & Shapeshifters, Copyright 2017, David Eynon; Author David Eynon
END OF LICENSE

Swords & Wizardry Core Rules, Copyright 2008, Matthew J. Finch
Swords & Wizardry Complete Rules, Copyright 2010, Matthew J. Finch
Swords & Wizardry Light Rules, Copyright 2016 Erik Stiene
Swords & Wizardry Continual Light Rules, Copyright 2016, Erik Stiene
This work features art by Daniel F. Walthall, found at: drivethrurpg.com/product/181517, available under a CC BY 4.0 license: creativecommons.org/licenses/by/4.0/