



REFERENCE
CARDS

THE DECK OF MANY ANIMATED SPELLS

LEVEL 8

PRINT 'N PLAY PDF

JOIN OUR DISCORD:
deckofmany.com/discord

FOLLOW US ON TWITTER:
[@thedeckofmany](https://twitter.com/thedeckofmany)



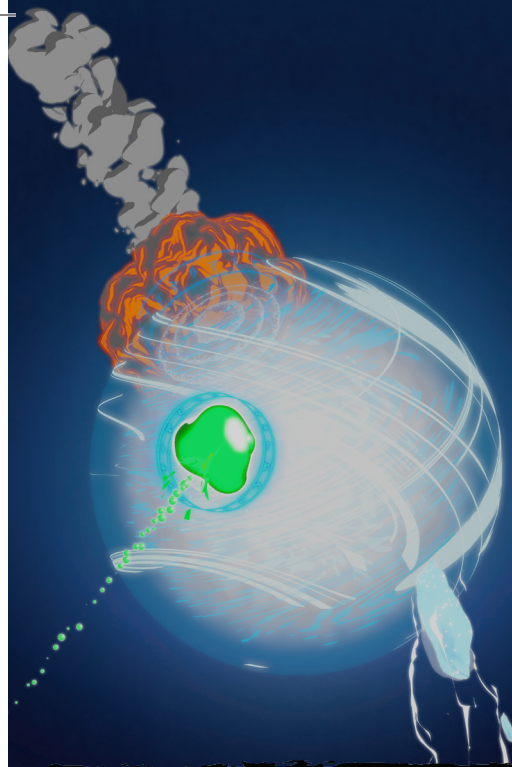
ANIMAL SHAPES

LEVEL 8
TRANSMUTATION

1 ACTION 30' V, S C. 24 HRS

ART: MIMI CHIU

THE DECK OF MANY © HIT POINT PRESS INC. 2020



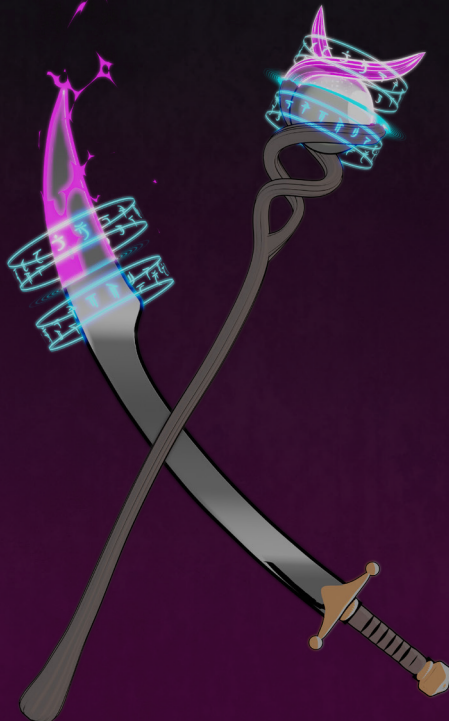
ANTIMAGIC FIELD

LEVEL 8
ABJURATION

1 ACTION SELF V, S, M C. 1 HR

ART: CHRIS KEARFORD

THE DECK OF MANY © HIT POINT PRESS INC. 2020



ANTIMAGIC FIELD (CONTINUED)

LEVEL 8
ABJURATION

ART: CHRIS KEARFORD

THE DECK OF MANY © HIT POINT PRESS INC. 2020



ANTIPATHY/SYMPATHY

LEVEL 8
ENCHANTMENT

1 HR 60' V, S, M 10 DAYS

ART: LIAM GREGG

THE DECK OF MANY © HIT POINT PRESS INC. 2020

ANTIMAGIC FIELD

8TH LEVEL ABJURATION



CASTING TIME

1 Action



RANGE

Self
(10-Foot-Radius Sphere)



COMPONENTS

V, S, M



DURATION

Concentration,
up to 1 hour

A 10-foot-radius invisible sphere of antimagic surrounds you. This area is divorced from the magical energy that suffuses the multiverse. Within the sphere, spells can't be cast, summoned creatures disappear, and even magic items become mundane. Until the spell ends, the sphere moves with you, centered on you.

Spells and other magical effects, except those created by an artifact or a deity, are suppressed in the sphere and can't protrude into it. A slot expended to cast a suppressed spell is consumed. While an effect is suppressed, it doesn't function, but the time it spends suppressed counts against its duration.

Targeted Effects. Spells and other magical effects, such as *magic missile* and *charm person*, that target a creature or an object in the sphere have no effect on that target.

Areas of Magic. The area of another spell or magical effect, such as *fireball*, can't extend into the sphere. If the sphere overlaps an area of magic, the part of the area that is covered by the sphere is suppressed. For example, the flames created by a *wall of fire* are suppressed within the sphere, creating a gap in the wall if the overlap is large enough.

Spells. Any active spell or other magical effect on a creature or an object in the sphere is suppressed while the creature or object is in it.

Magic Items. The properties and powers of magic items are suppressed in the sphere. For example, a *+1 longsword*, in the sphere functions as a nonmagical longsword.

CLERIC | WIZARD

ANIMAL SHAPES

8TH LEVEL TRANSMUTATION



CASTING TIME

1 Action



RANGE

30 Feet



COMPONENTS

V, S



DURATION

Concentration,
up to 24 hours

Your magic turns others into beasts. Choose any number of willing creatures that you can see within range. You transform each target into the form of a Large or smaller beast with a challenge rating of 4 or lower. On subsequent turns, you can use your action to transform affected creatures into new forms.

The transformation lasts for the duration for each target, or until the target drops to 0 hit points or dies. You can choose a different form for each target. A target's game statistics are replaced by the statistics of the chosen beast, though the target retains its alignment and Intelligence, Wisdom, and Charisma scores. The target assumes the hit points of its new form, and when it reverts to its normal form, it returns to the number of hit points it had before it transformed. If it reverts as a result of dropping to 0 hit points, any excess damage carries over to its normal form. As long as the excess damage doesn't reduce the creature's normal form to 0 hit points, it isn't knocked unconscious. The creature is limited in the actions it can perform by the nature of its new form, and it can't speak or cast spells.

The target's gear melds into the new form. The target can't activate, wield, or otherwise benefit from any of its equipment.

DRUID

ANTIPATHY/SYPATHY

8TH LEVEL ENCHANTMENT



CASTING TIME

1 Hour



RANGE

60 Feet
(200-Foot Cube)



COMPONENTS

V, S, M



DURATION

10 Days

This spell attracts or repels creatures of your choice. You target something within range, either a Huge or smaller object or creature or an area that is no larger than a 200-foot cube. Then specify a kind of intelligent creature, such as red dragons, goblins, or vampires. You invest the target with an aura that either attracts or repels the specified creatures for the duration. Choose antipathy or sympathy as the aura's effect.

Antipathy. The enchantment causes creatures of the kind you designated to feel an intense urge to leave the area and avoid the target. When such a creature can see the target or comes within 60 feet of it, the creature must succeed on a Wisdom saving throw or become frightened. The creature remains frightened while it can see the target or is within 60 feet of it. While frightened by the target, the creature must use its movement to move to the nearest safe spot from which it can't see the target. If the creature moves more than 60 feet from the target and can't see it, the creature is no longer frightened, but the creature becomes frightened again if it regains sight of the target or moves within 60 feet of it.

DRUID | WIZARD

ANTIMAGIC FIELD

8TH LEVEL ABJURATION

A magic weapon's properties and powers are suppressed if it is used against a target in the sphere or wielded by an attacker in the sphere. If a magic weapon or a piece of magic ammunition fully leaves the sphere (for example, if you fire a magic arrow or throw a magic spear at a target outside the sphere), the magic of the item ceases to be suppressed as soon as it exits.

Magical Travel. Teleportation and planar travel fail to work in the sphere, whether the sphere is the destination or the departure point for such magical travel. A portal to another location, world, or plane of existence, as well as an opening to an extradimensional space such as that created by the *rope trick* spell, temporarily closes while in the sphere.

Creatures and Objects. A creature or object summoned or created by magic temporarily winks out of existence in the sphere. Such a creature instantly reappears once the space the creature occupied is no longer within the sphere.

Dispel Magic. Spells and magical effects such as *dispel magic* have no effect on the sphere. Likewise, the spheres created by different *antimagic field* spells don't nullify each other.

MATERIAL COMPONENTS

A pinch of powdered iron or iron filings.

CLERIC | WIZARD

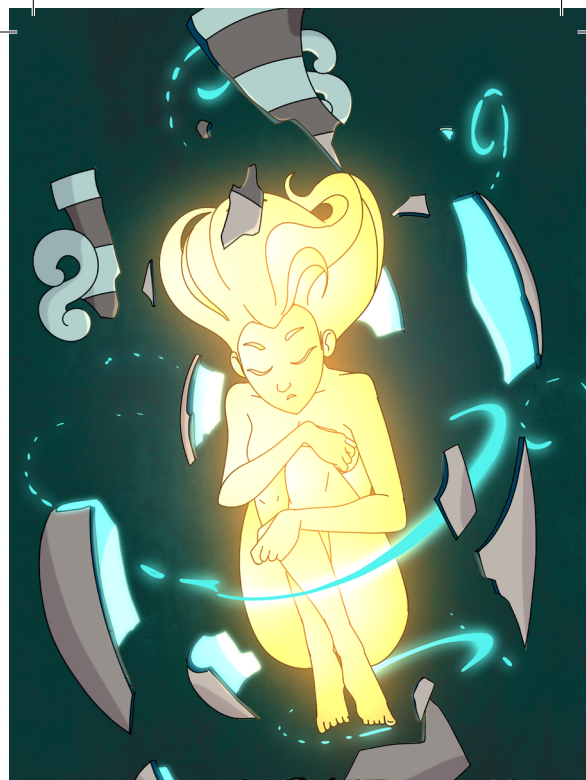


ANTIPATHY/SYMPATHY (CONTINUED)

LEVEL 8
ENCHANTMENT

ART: LIAM GREGG

THE DECK OF MANY © HIT POINT PRESS INC. 2020



CLONE

LEVEL 8
NECROMANCY

1 HOUR TOUCH V, S, M INSTANT

ART: JONATHAN HIGAREDA

THE DECK OF MANY © HIT POINT PRESS INC. 2020



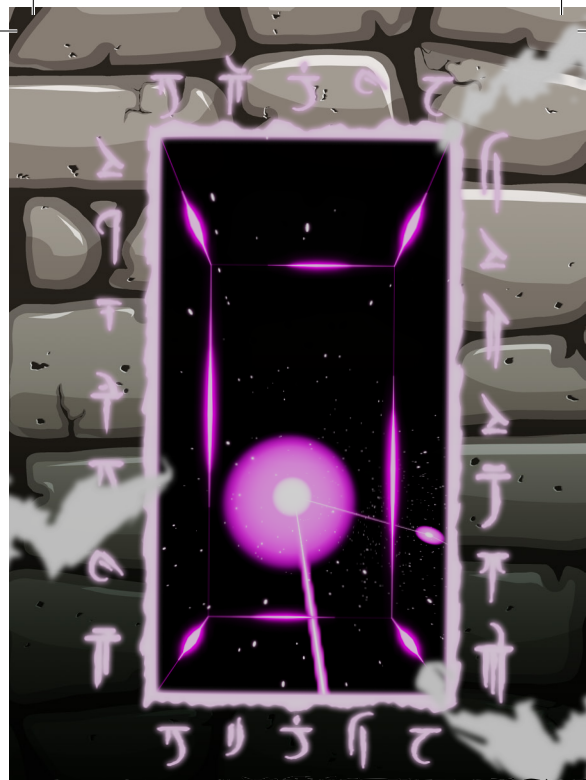
CONTROL WEATHER

LEVEL 8
TRANSUTATION

10 MINS SELF V, S, M C. 8 HRS

ART: FER LOZADA

THE DECK OF MANY © HIT POINT PRESS INC. 2020



DEMIPLANE

LEVEL 8
CONJURATION

1 ACTION 60' S 1 HR

ART: CHRIS KEARFORD

THE DECK OF MANY © HIT POINT PRESS INC. 2020

CLONE

8TH LEVEL NECROMANCY



CASTING TIME

1 Hour



RANGE

Touch



COMPONENTS

V, S, M



DURATION

Instantaneous

This spell grows an inert duplicate of a living, Medium creature as a safeguard against death. This clone forms inside a sealed vessel and grows to full size and maturity after 120 days; you can also choose to have the clone be a younger version of the same creature. It remains inert and endures indefinitely, as long as its vessel remains undisturbed.

At any time after the clone matures, if the original creature dies, its soul transfers to the clone, provided that the soul is free and willing to return. The clone is physically identical to the original and has the same personality, memories, and abilities, but none of the original's equipment. The original creature's physical remains, if they still exist, become inert and can't thereafter be restored to life, since the creature's soul is elsewhere.

MATERIAL COMPONENTS

A diamond worth at least 1,000 gp and at least 1 cubic inch of flesh of the creature that is to be cloned, which the spell consumes, and a vessel worth at least 2,000 gp that has a sealable lid and is large enough to hold a Medium creature, such as a huge urn, coffin, mud-filled cyst in the ground, or crystal container filled with salt water.

WIZARD

ANTIPATHY/SYMPATHY

8TH LEVEL ENCHANTMENT

Sympathy. The enchantment causes the specified creatures to feel an intense urge to approach the target while within 60 feet of it or able to see it. When such a creature can see the target or comes within 60 feet of it, the creature must succeed on a Wisdom saving throw or use its movement on each of its turns to enter the area or move within reach of the target. When the creature has done so, it can't willingly move away from the target. If the target damages or otherwise harms an affected creature, the affected creature can make a Wisdom saving throw to end the effect, as described below.

Ending the Effect. If an affected creature ends its turn while not within 60 feet of the target or able to see it, the creature makes a Wisdom saving throw. On a successful save, the creature is no longer affected by the target and recognizes the feeling of repugnance or attraction as magical. In addition, a creature affected by the spell is allowed another Wisdom saving throw every 24 hours while the spell persists.

A creature that successfully saves against this effect is immune to it for 1 minute, after which time it can be affected again.

MATERIAL COMPONENTS

Either a lump of alum soaked in vinegar for the antipathy effect or a drop of honey for the sympathy effect.

DRUID | WIZARD

DEMIPLANE

8TH LEVEL CONJURATION



CASTING TIME

1 Action



RANGE

60 Feet



COMPONENTS

S



DURATION

1 Hour

You create a shadowy door on a flat solid surface that you can see within range. The door is large enough to allow Medium creatures to pass through unhindered. When opened, the door leads to a demiplane that appears to be an empty room 30 feet in each dimension, made of wood or stone. When the spell ends, the door disappears, and any creatures or objects inside the demiplane remain trapped there, as the door also disappears from the other side.

Each time you cast this spell, you can create a new demiplane, or have the shadowy door connect to a demiplane you created with a previous casting of this spell. Additionally, if you know the nature and contents of a demiplane created by a casting of this spell by another creature, you can have the shadowy door connect to its demiplane instead.

WARLOCK | WIZARD

CONTROL WEATHER

8TH LEVEL TRANSMUTATION



CASTING TIME

10 Minutes



RANGE

Self (5-Mile-Radius Sphere)



COMPONENTS

V, S, M



DURATION

Concentration, up to 8 hours

You take control of the weather within 5 miles of you for the duration. You must be outdoors to cast this spell. Moving to a place where you don't have a clear path to the sky ends the spell early.

When you cast the spell, you change the current weather conditions, which are determined by the DM based on the climate and season. You can change precipitation, temperature, and wind. It takes 1d4 × 10 minutes for the new conditions to take effect. Once they do so, you can change the conditions again. When the spell ends, the weather gradually returns to normal.

When you change the weather conditions, find a current condition on the following tables and change its stage by one, up or down. When changing the wind, you can change its direction.

Temperature		Precipitation	
Stage	Condition	Stage	Condition
1	Unbearable heat	1	Clear
2	Hot	2	Light clouds
3	Warm	3	Overcast or ground fog
4	Cool	4	Rain, hail, or snow
5	Cold	5	Torrential rain, driving hail, or blizzard
6	Arctic cold		
Wind			
Stage	Condition		
1	Calm		
2	Moderate wind		
3	Strong wind		
4	Gale		
5	Storm		

MATERIAL COMPONENTS

Burning incense and bits of earth and wood mixed in water.

CLERIC | DRUID | WIZARD



DOMINATE MONSTER

LEVEL 8
ENCHANTMENT

1 ACTION 60' V, S C. 1 HR

ART: JONATHAN HIGAREDA

THE DECK OF MANY © HIT POINT PRESS INC. 2020



EARTHQUAKE

LEVEL 8
EVOCATION

1 ACTION 500' V, S, M C. 1 MIN

ART: FER LOZADA

THE DECK OF MANY © HIT POINT PRESS INC. 2020



FEEBLEMIND

LEVEL 8
ENCHANTMENT

1 ACTION 150' V, S, M INSTANT

ART: JONATHAN HIGAREDA

THE DECK OF MANY © HIT POINT PRESS INC. 2020



GLIBNESS

LEVEL 8
TRANSMUTATION

1 ACTION SELF V 1 HR

ART: MIMI CHIU

THE DECK OF MANY © HIT POINT PRESS INC. 2020

EARTHQUAKE

8TH LEVEL EVOCATION



CASTING TIME

1 Action



RANGE

500 Feet



COMPONENTS

V, S, M



DURATION

Concentration,
up to 1 minute

You create a seismic disturbance at a point on the ground that you can see within range. For the duration, an intense tremor rips through the ground in a 100-foot-radius circle centered on that point and shakes creatures and structures in contact with the ground in that area.

The ground in the area becomes difficult terrain. Each creature on the ground that is concentrating must make a Constitution saving throw. On a failed save, the creature's concentration is broken.

When you cast this spell and at the end of each turn you spend concentrating on it, each creature on the ground in the area must make a Dexterity saving throw. On a failed save, the creature is knocked prone.

This spell can have additional effects depending on the terrain in the area, as determined by the GM.

Fissures. Fissures open throughout the spell's area at the start of your next turn after you cast the spell. A total of 1d6 such fissures open in locations chosen by the GM. Each is 1d10 × 10 feet deep, 10 feet wide, and extends from one edge of the spell's area to the opposite side. A creature standing on a spot where a fissure opens must succeed on a Dexterity saving throw or fall in. A creature that successfully saves moves with the fissure's edge as it opens.

A fissure that opens beneath a structure causes it to automatically collapse.

Structures. The tremor deals 50 bludgeoning damage to any structure in contact with the ground in the area when you cast the spell and at the start of each of your turns until the spell ends. If a structure drops to 0 hit points, it collapses and potentially damages nearby creatures. A creature within half the distance of a structure's height must make a Dexterity saving throw. On a failed save, the creature takes 5d6 bludgeoning damage, is knocked prone, and is buried in the rubble, requiring a DC 20 Strength (Athletics) check as an action to escape. The GM can adjust the DC higher or lower, depending on the nature of the rubble. On a successful save, the creature takes half as much damage and doesn't fall prone or become buried.

MATERIAL COMPONENTS

A pinch of dirt, a piece of rock, and a lump of clay.

CLERIC | DRUID | SORCERER

DOMINATE MONSTER

8TH LEVEL ENCHANTMENT



CASTING TIME

1 Action



RANGE

60 Feet



COMPONENTS

V, S



DURATION

Concentration,
up to 1 hour

You attempt to beguile a creature that you can see within range. It must succeed on a Wisdom saving throw or be charmed by you for the duration. If you or creatures that are friendly to you are fighting it, it has advantage on the saving throw.

While the creature is charmed, you have a telepathic link with it as long as the two of you are on the same plane of existence. You can use this telepathic link to issue commands to the creature while you are conscious (no action required), which it does its best to obey. You can specify a simple and general course of action, such as "Attack that creature," "Run over there," or "Fetch that object." If the creature completes the order and doesn't receive further direction from you, it defends and preserves itself to the best of its ability.

You can use your action to take total and precise control of the target. Until the end of your next turn, the creature takes only the actions you choose, and doesn't do anything that you don't allow it to do. During this time, you can also cause the creature to use a reaction, but this requires you to use your own reaction as well.

Each time the target takes damage, it makes a new Wisdom saving throw against the spell. If the saving throw succeeds, the spell ends.

At Higher Levels. When you cast this spell with a 9th level spell slot, the duration is concentration, up to 8 hours.

BARD | SORCERER | WARLOCK | WIZARD

GLIBNESS

8TH LEVEL TRANSMUTATION



CASTING TIME

1 Action



RANGE

Self



COMPONENTS

V



DURATION

1 Hour

Until the spell ends, when you make a Charisma check, you can replace the number you roll with a 15. Additionally, no matter what you say, magic that would determine if you are telling the truth indicates that you are being truthful.

BARD | WARLOCK

FEEBLEMIND

8TH LEVEL ENCHANTMENT



CASTING TIME

1 Action



RANGE

150 Feet



COMPONENTS

V, S, M



DURATION

Instantaneous

You blast the mind of a creature that you can see within range, attempting to shatter its intellect and personality. The target takes 4d6 psychic damage and must make an Intelligence saving throw.

On a failed save, the creature's Intelligence and Charisma scores become 1. The creature can't cast spells, activate magic items, understand language, or communicate in any intelligible way. The creature can, however, identify its friends, follow them, and even protect them.

At the end of every 30 days, the creature can repeat its saving throw against this spell. If it succeeds on its saving throw, the spell ends.

The spell can also be ended by *greater restoration*, *heal*, or *wish*.

MATERIAL COMPONENTS

A handful of clay, crystal, glass, or mineral spheres.

BARD | DRUID | WARLOCK | WIZARD

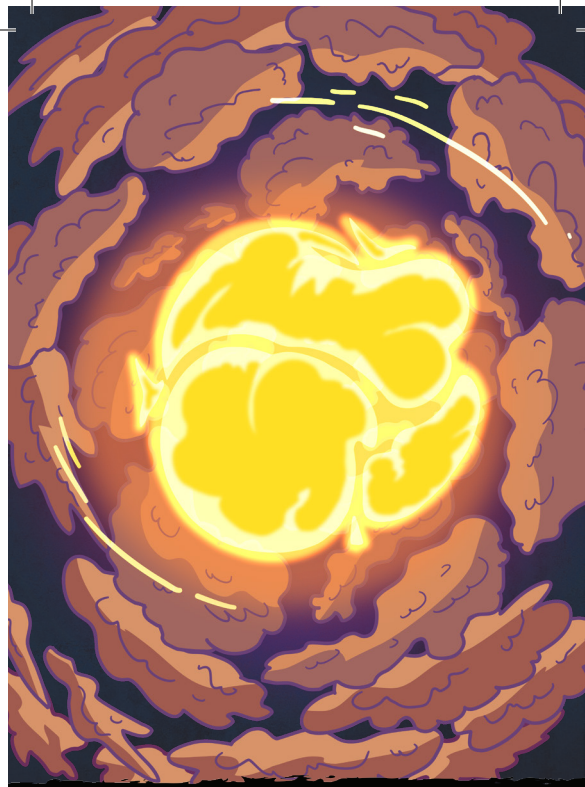


HOLY AURA

LEVEL 8
ABJURATION

1 ACTION SELF V, S, M C. 1 MIN

ART: SAM ALLEN THE DECK OF MANY © HIT POINT PRESS INC. 2020



INCENDIARY CLOUD

LEVEL 8
CONJURATION

1 ACTION 150' V, S C. 1 MIN

ART: FER LOZADA THE DECK OF MANY © HIT POINT PRESS INC. 2020



MAZE

LEVEL 8
CONJURATION

1 ACTION 60' V, S C. 10 MINS

ART: MIMI CHIU THE DECK OF MANY © HIT POINT PRESS INC. 2020



MIND BLANK

LEVEL 8
ABJURATION

1 ACTION TOUCH V, S 24 HRS

ART: JAMES FRIO THE DECK OF MANY © HIT POINT PRESS INC. 2020

INCENDIARY CLOUD

8TH LEVEL CONJURATION



CASTING TIME

1 Action



RANGE

150 Feet
(20-Foot-Radius Sphere)



COMPONENTS

V, S



DURATION

Concentration,
up to 1 minute

A swirling cloud of smoke shot through with white-hot embers appears in a 20-foot-radius sphere centered on a point within range. The cloud spreads around corners and is heavily obscured. It lasts for the duration or until a wind of moderate or greater speed (at least 10 miles per hour) disperses it.

When the cloud appears, each creature in it must make a Dexterity saving throw. A creature takes 10d8 fire damage on a failed save, or half as much damage on a successful one. A creature must also make this saving throw when it enters the spell's area for the first time on a turn or ends its turn there.

The cloud moves 10 feet directly away from you in a direction that you choose at the start of each of your turns.

SORCERER | WIZARD

HOLY AURA

8TH LEVEL ABJURATION



CASTING TIME

1 Action



RANGE

Self
(30-Foot-Radius Sphere)



COMPONENTS

V, S, M



DURATION

Concentration,
up to 1 minute

Divine light washes out from you and coalesces in a soft radiance in a 30-foot radius around you. Creatures of your choice in that radius when you cast this spell shed dim light in a 5-foot radius and have advantage on all saving throws, and other creatures have disadvantage on attack rolls against them until the spell ends. In addition, when a fiend or an undead hits an affected creature with a melee attack, the aura flashes with brilliant light. The attacker must succeed on a Constitution saving throw or be blinded until the spell ends.

MATERIAL COMPONENTS

A tiny reliquary worth at least 1,000 gp containing a sacred relic, such as a scrap of cloth from a saint's robe or a piece of parchment from a religious text.

CLERIC

MIND BLANK

8TH LEVEL ABJURATION



CASTING TIME

1 Action



RANGE

Touch



COMPONENTS

V, S



DURATION

24 Hours

Until the spell ends, one willing creature you touch is immune to psychic damage, any effect that would sense its emotions or read its thoughts, divination spells, and the charmed condition. The spell even foils *wish* spells and spells or effects of similar power used to affect the target's mind or to gain information about the target.

BARD | WIZARD

MAZE

8TH LEVEL CONJURATION



CASTING TIME

1 Action



RANGE

60 Feet



COMPONENTS

V, S



DURATION

Concentration,
up to 10 minute

You banish a creature that you can see within range into a labyrinthine demiplane. The target remains there for the duration or until it escapes the maze.

The target can use its action to attempt to escape. When it does so, it makes a DC 20 Intelligence check. If it succeeds, it escapes, and the spell ends (a minotaur or goristro demon automatically succeeds).

When the spell ends, the target reappears in the space it left or, if that space is occupied, in the nearest unoccupied space.

WIZARD



POWER WORD STUN

LEVEL 8
ENCHANTMENT

1 ACTION 60' V INSTANT

ART: TOMMY MILLAR

THE DECK OF MANY © HIT POINT PRESS INC. 2020



SUNBURST

LEVEL 8
EVOCATION

1 ACTION 150' V, S, M INSTANT

ART: MIMI CHIU

THE DECK OF MANY © HIT POINT PRESS INC. 2020

SUNBURST

8TH LEVEL EVOCATION



CASTING TIME

1 Action



RANGE

150 Feet
(60-Foot-Radius Sphere)



COMPONENTS

V, S, M



DURATION

Instantaneous

Brilliant sunlight flashes in a 60-foot radius centered on a point you choose within range. Each creature in that light must make a Constitution saving throw. On a failed save, a creature takes 12d6 radiant damage and is blinded for 1 minute. On a successful save, it takes half as much damage and isn't blinded by this spell. Undead and oozes have disadvantage on this saving throw.

A creature blinded by this spell makes another Constitution saving throw at the end of each of its turns. On a successful save, it is no longer blinded.

This spell dispels any darkness in its area that was created by a spell.

MATERIAL COMPONENTS

Fire and a piece of sunstone.

DRUID | SORCERER | WIZARD

POWER WORD STUN

8TH LEVEL ENCHANTMENT



CASTING TIME

1 Action



RANGE

60 Feet



COMPONENTS

V



DURATION

Instantaneous

You speak a word of power that can overwhelm the mind of one creature you can see within range, leaving it dumbfounded. If the target has 150 hit points or fewer, it is stunned. Otherwise, the spell has no effect.

The stunned target must make a Constitution saving throw at the end of each of its turns.

On a successful save, this stunning effect ends.

BARD | SORCERER | WARLOCK | WIZARD



LICENCE

The terms of the Open Gaming License Version 1.0a are as follows:

OPEN GAME LICENSE Version 1.0a

The following text is the property of Wizards of the Coast, Inc. and is Copyright 2000 Wizards of the Coast, Inc ("Wizards"). All Rights Reserved. 1. Definitions: (a) "Contributors" means the copyright and/or trademark owners who have contributed Open Game Content; (b) "Derivative Material" means copyrighted material including derivative works and translations (including into other computer languages), potation, modification, correction, addition, extension, upgrade, improvement, compilation, abridgment or other form in which an existing work may be recast, transformed or adapted; (c) "Distribute" means to reproduce, license, rent, lease, sell, broadcast, publicly display, transmit or otherwise distribute; (d) "Open Game Content" means the game mechanic and includes the methods, procedures, processes and routines to the extent such content does not embody the Product Identity and is an enhancement over the prior art and any additional content clearly identified as Open Game Content by the Contributor, and means any work covered by this License, including translations and derivative works under copyright law, but specifically excludes Product Identity. (e) "Product Identity" means product and product line names, logos and identifying marks including trade dress; artifacts; creatures characters; stories, storylines, plots, thematic elements, dialogue, incidents, language, artwork, symbols, designs, depictions, likenesses, formats, poses, concepts, themes and graphic, photographic and other visual or audio representations; names and descriptions of characters, spells, enchantments, personalities, teams, personas, likenesses and special abilities; places, locations, environments, creatures, equipment, magical or supernatural abilities or effects, logos, symbols, or graphic designs; and any other trademark or registered trademark clearly identified as Product identity by the owner of the Product Identity, and which specifically excludes the Open Game Content; (f) "Trademark" means the logos, names, mark, sign, motto, designs that are used by a Contributor to identify itself or its products or the associated products contributed to the Open Game License by the Contributor (g) "Use", "Used" or "Using" means to use, Distribute, copy, edit, format, modify, translate and otherwise create Derivative Material of Open Game

Content. (h) "You" Not for resale. Permission granted to print or photocopy this document for personal use only. System Reference Document 5.1 2 or "Your" means the licensee in terms of this agreement.

2. The License: This License applies to any Open Game Content that contains a notice indicating that the Open Game Content may only be Used under and in terms of this License. You must affix such a notice to any Open Game Content that you Use. No terms may be added to or subtracted from this License except as described by the License itself. No other terms or conditions may be applied to any Open Game Content distributed using this License.

3. Offer and Acceptance: By Using the Open Game Content You indicate Your acceptance of the terms of this License.

4. Grant and Consideration: In consideration for agreeing to use this License, the Contributors grant You a perpetual, worldwide, royalty-free, nonexclusive license with the exact terms of this License to Use, the Open Game Content.

5. Representation of Authority to Contribute: If You are contributing original material as Open Game Content, You represent that Your Contributions are Your original creation and/or You have sufficient rights to grant the rights conveyed by this License.

6. Notice of License Copyright: You must update the COPYRIGHT NOTICE portion of this License to include the exact text of the COPYRIGHT NOTICE of any Open Game Content You are copying, modifying or distributing, and You must add the title, the copyright date, and the copyright holder's name to the COPYRIGHT NOTICE of any original Open Game Content you Distribute.

7. Use of Product Identity: You agree not to Use any Product Identity, including as an indication as to compatibility, except as expressly licensed in another, independent Agreement with the owner of each element of that Product Identity. You agree not to indicate compatibility or co-adaptability with any Trademark or Registered Trademark in conjunction with a work containing Open Game Content except as expressly licensed in another, independent Agreement with the owner of such Trademark or Registered Trademark. The use of any Product

Identity in Open Game Content does not constitute a challenge to the ownership of that Product Identity. The owner of any Product Identity used in Open Game Content shall retain all rights, title and interest in and to that Product Identity.

8. Identification: If you distribute Open Game Content You must clearly indicate which portions of the work that you are distributing are Open Game Content.

9. Updating the License: Wizards or its designated Agents may publish updated versions of this License. You may use any authorized version of this License to copy, modify and distribute any Open Game Content originally distributed under any version of this License.

10. Copy of this License: You MUST include a copy of this License with every copy of the Open Game Content You Distribute.

11. Use of Contributor Credits: You may not market or advertise the Open Game Content using the name of any Contributor unless You have written permission from the Contributor to do so.

12. Inability to Comply: If it is impossible for You to comply with any of the terms of this License with respect to some or all of the Open Game Content due to statute, judicial order, or governmental regulation then You may not Use any Open Game Material so affected.

13. Termination: This License will terminate automatically if You fail to comply with all terms herein and fail to cure such breach within 30 days of becoming aware of the breach. All sublicenses shall survive the termination of this License.

14. Reformation: If any provision of this License is held to be unenforceable, such provision shall be reformed only to the extent necessary to make it enforceable.

15. COPYRIGHT NOTICE Open Game License v 1.0a Copyright 2000, Wizards of the Coast, LLC.

System Reference Document 5.1 Copyright 2016, Wizards of the Coast, Inc.; Authors Mike Mearls, Jeremy Crawford, Chris Perkins, Rodney Thompson, Peter Lee, James Wyatt, Robert J. Schwalb, Bruce R. Cordell, Chris Sims, and Steve Townshend, based on original material by E. Gary Gygax and Dave Arneson.

END OF LICENSE

PRODUCT IDENTITY

The following items are designated Product Identity, as defined in Section 1(e) of the Open Gaming License Version 1.0a and are subject to the conditions set forth in Section 7 of the Open Gaming Licence, and are not Open Content:

All artwork, including but not limited to, works created by Mimi Chiu, Sam Allen, James Frio, Johnathan Higareda, Fer Lozada, Tommy Millar, Liam Gregg, Chris Kearford

Hit Point Press Inc. branding, including but not limited to, logos, trademarks, graphic design, layouts and identifying marks,

The Deck of Many branding, including but not limited to logos, trademarks, graphic design, layouts and identifying marks,

The Deck of Many Animated Spells branding, including but not limited to, logos, trademarks, graphic design, layouts and identifying marks,

Graphic design elements of the Deck of Many, including but not limited to, layouts, box design, graphics, and iconography,

All text created by Hit Point Press Inc. not found in the Open Gaming License Version 1.0a, System Reference Document 5.1 found at the internet link http://media.wizards.com/2016/downloads/DND/SRD-OGL_V5.1.pdf,

Promotional materials for the Deck of Many, including but not limited to, video, animation, and social media content,

All merchandise associated with the Deck of Many, including but not limited to, enamel pins, deck boxes, books, figurines, card names, statistics, abilities, spells, and all information found on all cards.

OPEN GAMING CONTENT

All content from the System Reference Document 5.1 is Open Game Content as described in Section 1(d) of the License. No portion of this work other than the material designated as Open Game Content may be reproduced in any form without permission.