



REFERENCE
CARDS

THE DECK ^{OF} MANY ANIMATED SPELLS

LEVEL 1 VOL 1

PRINT 'N PLAY PDF

JOIN OUR DISCORD:
deckofmany.com/discord

FOLLOW US ON TWITTER:
[@thedeckofmany](https://twitter.com/thedeckofmany)



ALARM LEVEL 1
ABJURATION (R)

1 MIN 30' V, S, M 8 HRS

ART: LIAM BERTELSEN THE DECK OF MANY © HIT POINT PRESS INC. 2019



ANIMAL FRIENDSHIP LEVEL 1
ENCHANTMENT

1 ACTION 30' V, S, M 24 HRS

ART: ANONYMOUS THE DECK OF MANY © HIT POINT PRESS INC. 2019



BANE LEVEL 1
ENCHANTMENT

1 ACTION 30' V, S, M C. 1 MIN

ART: BEN RAVID THE DECK OF MANY © HIT POINT PRESS INC. 2019



BLESS LEVEL 1
ENCHANTMENT

1 ACTION 30' V, S, M C. 1 MIN

ART: MENG HER THE DECK OF MANY © HIT POINT PRESS INC. 2019

ANIMAL FRIENDSHIP

1ST LEVEL ENCHANTMENT



CASTING TIME

1 Action



RANGE

30 Feet



COMPONENTS

V, S, M



DURATION

24 Hours

This spell lets you convince a beast that you mean it no harm. Choose a beast that you can see within range. It must see and hear you. If the beast's Intelligence is 4 or higher, the spell fails. Otherwise, the beast must succeed on a Wisdom saving throw or be charmed by you for the spell's duration. If you or one of your companions harms the target, the spell ends.

At Higher Levels. When you cast this spell using a spell slot of 2nd level or higher, you can affect one additional beast for each slot level above 1st.

MATERIAL COMPONENTS

A morsel of food.

BARD | DRUID | RANGER

ALARM

1ST LEVEL ABJURATION (RITUAL)



CASTING TIME

1 Minute



RANGE

30 Feet



COMPONENTS

V, S, M



DURATION

8 Hours

You set an alarm against unwanted intrusion. Choose a door, a window, or an area within range that is no larger than a 20-foot cube. Until the spell ends, an alarm alerts you whenever a Tiny or larger creature touches or enters the warded area. When you cast the spell, you can designate creatures that won't set off the alarm. You also choose whether the alarm is mental or audible.

A mental alarm alerts you with a ping in your mind if you are within 1 mile of the warded area. This ping awakens you if you are sleeping.

An audible alarm produces the sound of a hand bell for 10 seconds within 60 feet.

MATERIAL COMPONENTS

A tiny bell and a piece of fine silver wire.

RANGER | WIZARD

BLESS

1ST LEVEL ENCHANTMENT



CASTING TIME

1 Action



RANGE

30 Feet



COMPONENTS

V, S, M



DURATION

Concentration,
up to 1 minute

You bless up to three creatures of your choice within range. Whenever a target makes an attack roll or a saving throw before the spell ends, the target can roll a d4 and add the number rolled to the attack roll or saving throw.

At Higher Levels. When you cast this spell using a spell slot of 2nd level or higher, you can target one additional creature for each slot level above 1st.

MATERIAL COMPONENTS

A sprinkling of holy water.

CLERIC | PALADIN

BANE

1ST LEVEL ENCHANTMENT



CASTING TIME

1 Action



RANGE

30 Feet



COMPONENTS

V, S, M



DURATION

Concentration,
up to 1 minute

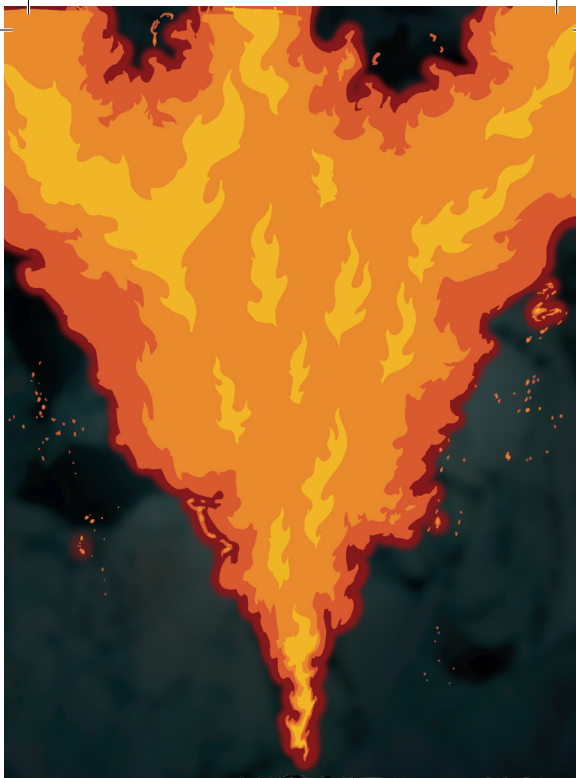
Up to three creatures of your choice that you can see within range must make Charisma saving throws. Whenever a target that fails this saving throw makes an attack roll or a saving throw before the spell ends, the target must roll a d4 and subtract the number rolled from the attack roll or saving throw.

At Higher Levels. When you cast this spell using a spell slot of 2nd level or higher, you can target one additional creature for each slot level above 1st.

MATERIAL COMPONENTS

A drop of blood.

BARD | CLERIC



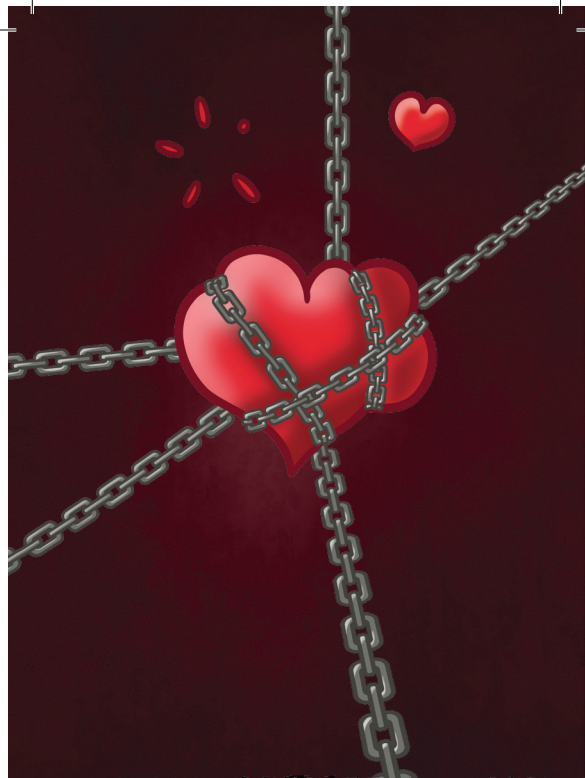
BURNING HANDS

LEVEL 1
EVOCATION

1 ACTION 1 SELF V, S 1 INSTANT

ART: DANTE TUMMINELLO

THE DECK OF MANY © HIT POINT PRESS INC. 2019



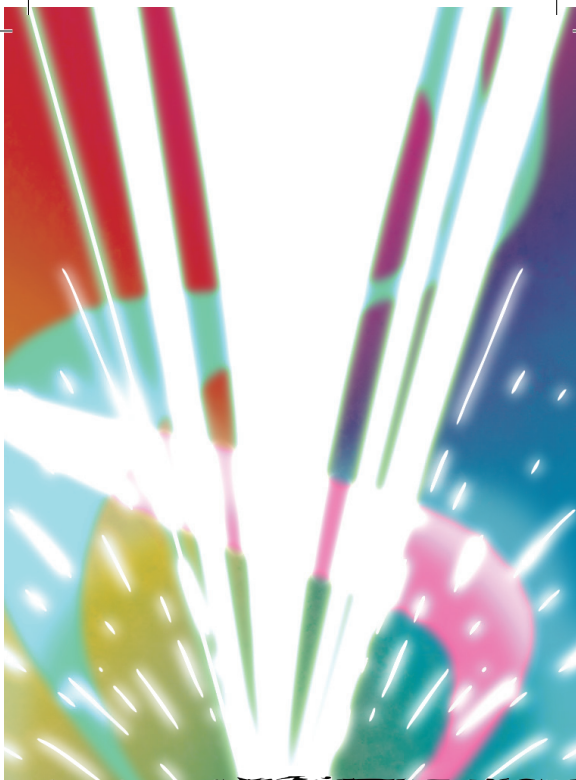
CHARM PERSON

LEVEL 1
ENCHANTMENT

1 ACTION 1 30' V, S 1 HR

ART: LIAM BERTELSEN

THE DECK OF MANY © HIT POINT PRESS INC. 2019



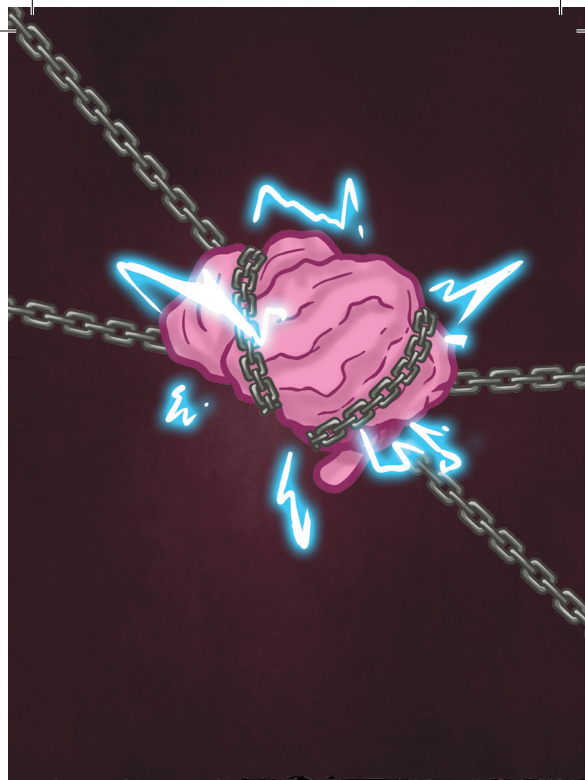
COLOR SPRAY

LEVEL 1
ILLUSION

1 ACTION 1 SELF V, S, M 1 ROUND

ART: KOHL ALBAN

THE DECK OF MANY © HIT POINT PRESS INC. 2019



COMMAND

LEVEL 1
ENCHANTMENT

1 ACTION 1 60' V 1 ROUND

ART: LIAM BERTELSEN

THE DECK OF MANY © HIT POINT PRESS INC. 2019

CHARM PERSON

1ST LEVEL ENCHANTMENT



CASTING TIME

1 Action



RANGE

30 Feet



COMPONENTS

V, S



DURATION

1 Hour

You attempt to charm a humanoid you can see within range. It must make a Wisdom saving throw, and does so with advantage if you or your companions are fighting it. If it fails the saving throw, it is charmed by you until the spell ends or until you or your companions do anything harmful to it. The charmed creature regards you as a friendly acquaintance. When the spell ends, the creature knows it was charmed by you.

At Higher Levels. When you cast this spell using a spell slot of 2nd level or higher, you can target one additional creature for each slot level above 1st. The creatures must be within 30 feet of each other when you target them.

BARD | DRUID | SORCERER | WARLOCK | WIZARD

BURNING HANDS

1ST LEVEL EVOCATION



CASTING TIME

1 Action



RANGE

Self (15-Foot Cone)



COMPONENTS

V, S



DURATION

Instantaneous

As you hold your hands with thumbs touching and fingers spread, a thin sheet of flames shoots forth from your outstretched fingertips. Each creature in a 15-foot cone must make a Dexterity saving throw. A creature takes 3d6 fire damage on a failed save, or half as much damage on a successful one.

The fire ignites any flammable objects in the area that aren't being worn or carried.

At Higher Levels. When you cast this spell using a spell slot of 2nd level or higher, the damage increases by 1d6 for each slot level above 1st.

SORCERER | WIZARD

COMMAND

1ST LEVEL ENCHANTMENT



CASTING TIME

1 Action



RANGE

60 Feet



COMPONENTS

V



DURATION

1 Round

You speak a one-word command to a creature you can see within range. The target must succeed on a Wisdom saving throw or follow the command on its next turn. The spell has no effect if the target is undead, if it doesn't understand your language, or if your command is directly harmful to it.

Some typical commands and their effects follow. You might issue a command other than one described here. If you do so, the GM determines how the target behaves. If the target can't follow your command, the spell ends.

Approach. The target moves toward you by the shortest and most direct route, ending its turn if it moves within 5 feet of you.

Drop. The target drops whatever it is holding and then ends its turn.

Flee. The target spends its turn moving away from you by the fastest available means.

Grovel. The target falls prone and then ends its turn.

Halt. The target doesn't move and takes no actions. A flying creature stays aloft, provided that it is able to do so. If it must move to stay aloft, it flies the minimum distance needed to remain in the air.

At Higher Levels. When you cast this spell using a spell slot of 2nd level or higher, you can affect one additional creature for each slot level above 1st. The creatures must be within 30 feet of each other when you target them.

CLERIC | PALADIN

COLOR SPRAY

1ST LEVEL ILLUSION



CASTING TIME

1 Action



RANGE

Self (15-Foot Cone)



COMPONENTS

V, S, M



DURATION

1 Round

A dazzling array of flashing, colored light springs from your hand. Roll 6d10; the total is how many hit points of creatures this spell can effect. Creatures in a 15-foot cone originating from you are affected in ascending order of their current hit points (ignoring unconscious creatures and creatures that can't see).

Starting with the creature that has the lowest current hit points, each creature affected by this spell is blinded until the spell ends. Subtract each creature's hit points from the total before moving on to the creature with the next lowest hit points. A creature's hit points must be equal to or less than the remaining total for that creature to be affected.

At Higher Levels. When you cast this spell using a spell slot of 2nd level or higher, roll an additional 2d10 for each slot level above 1st.

MATERIAL COMPONENTS

A pinch of powder or sand that is colored red, yellow, and blue.

SORCERER | WIZARD



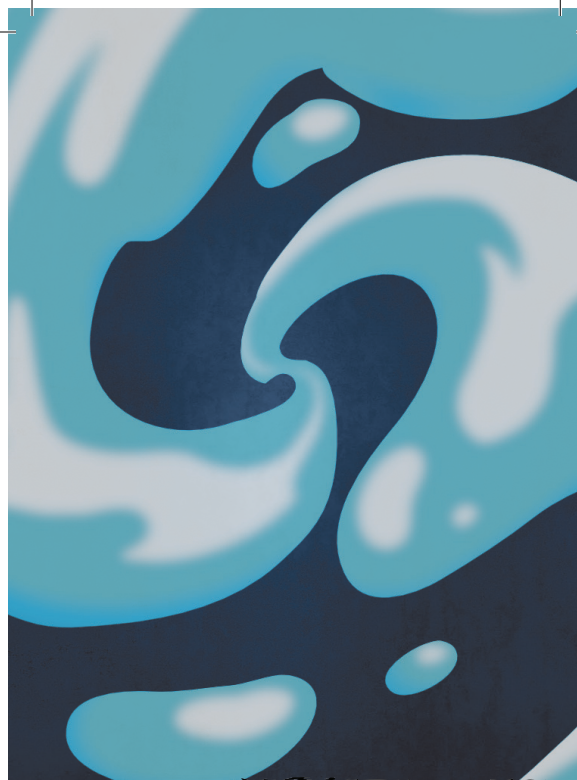
COMPREHEND LANGUAGES

LEVEL 1
DIVINATION (R)

1 ACTION SELF V, S, M 1 HR

ART: ANA ROJAS

THE DECK OF MANY © HIT POINT PRESS INC. 2019



CREATE OR DESTROY WATER

LEVEL 1
TRANSMUTATION

1 ACTION 30' V, S, M INSTANT

ART: KOHL ALBAN

THE DECK OF MANY © HIT POINT PRESS INC. 2019



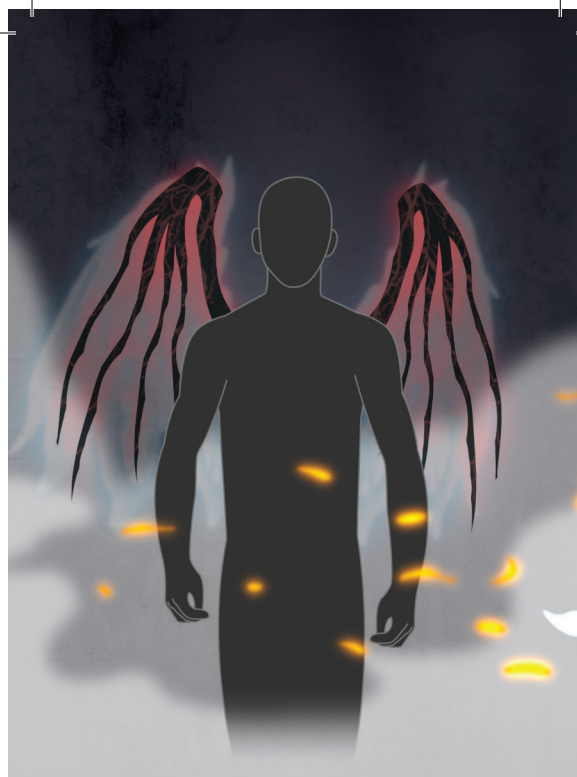
CURE WOUNDS

LEVEL 1
EVOCATION

1 ACTION TOUCH V, S INSTANT

ART: JOSH GRINLINTON

THE DECK OF MANY © HIT POINT PRESS INC. 2019



DETECT EVIL & GOOD

LEVEL 1
DIVINATION

1 ACTION SELF V, S C.10 MINS

ART: KOHL ALBAN

THE DECK OF MANY © HIT POINT PRESS INC. 2019

CREATE OR DESTROY WATER

1ST LEVEL TRANSMUTATION



CASTING TIME

1 Action



RANGE

30 Feet
(30-Foot Cube)



COMPONENTS

V, S, M



DURATION

Instantaneous

You either create or destroy water.

Create Water. You create up to 10 gallons of clean water within range in an open container. Alternatively, the water falls as rain in a 30-foot cube within range, extinguishing exposed flames in the area.

Destroy Water. You destroy up to 10 gallons of water in an open container within range. Alternatively, you destroy fog in a 30-foot cube within range.

At Higher Levels. When you cast this spell using a spell slot of 2nd level or higher, you create or destroy 10 additional gallons of water, or the size of the cube increases by 5 feet, for each slot level above 1st.

MATERIAL COMPONENTS

A drop of water if creating water or a few grains of sand if destroying it.

CLERIC | DRUID

COMPREHEND LANGUAGES

1ST LEVEL DIVINATION (RITUAL)



CASTING TIME

1 Action



RANGE

Self



COMPONENTS

V, S, M



DURATION

1 Hour

For the duration, you understand the literal meaning of any spoken language that you hear. You also understand any written language that you see, but you must be touching the surface on which the words are written. It takes about 1 minute to read one page of text.

This spell doesn't decode secret messages in a text or a glyph, such as an arcane sigil, that isn't part of a written language.

MATERIAL COMPONENTS

A pinch of soot and salt.

BARD | SORCERER | WARLOCK | WIZARD

DETECT EVIL & GOOD

1ST LEVEL DIVINATION



CASTING TIME

1 Action



RANGE

Self
(30-Foot-Radius Sphere)



COMPONENTS

V, S



DURATION

Concentration,
up to 10 minutes

For the duration, you know if there is an aberration, celestial, elemental, fey, fiend, or undead within 30 feet of you, as well as where the creature is located. Similarly, you know if there is a place or object within 30 feet of you that has been magically consecrated or desecrated.

The spell can penetrate most barriers, but it is blocked by 1 foot of stone, 1 inch of common metal, a thin sheet of lead, or 3 feet of wood or dirt.

CLERIC | PALADIN

CURE WOUNDS

1ST LEVEL EVOCATION



CASTING TIME

1 Action



RANGE

Touch



COMPONENTS

V, S



DURATION

Instantaneous

A creature you touch regains a number of hit points equal to 1d8 + your spellcasting ability modifier. This spell has no effect on undead or constructs.

At Higher Levels. When you cast this spell using a spell slot of 2nd level or higher, the healing increases by 1d8 for each slot level above 1st.

BARD | CLERIC | DRUID | PALADIN | RANGER



DETECT MAGIC LEVEL 1
DIVINATION (R)

1 ACTION SELF V, S C.10 MINS

ART: MENG HER THE DECK OF MANY © HIT POINT PRESS INC. 2019



DETECT POISON & DISEASE LEVEL 1
DIVINATION (R)

1 ACTION SELF V, S, M C.10 MINS

ART: DANTE TUMMINELLO THE DECK OF MANY © HIT POINT PRESS INC. 2019



DISGUISE SELF LEVEL 1
ILLUSION

1 ACTION SELF V, S 1 HR

ART: MENG HER THE DECK OF MANY © HIT POINT PRESS INC. 2019



DIVINE FAVOR LEVEL 1
EVOCATION

1 BONUS SELF V, S C.1 MIN

ART: KOHL ALBAN THE DECK OF MANY © HIT POINT PRESS INC. 2019

DETECT POISON & DISEASE

1ST LEVEL DIVINATION (RITUAL)



CASTING TIME

1 Action



RANGE

Self
(30-Foot-Radius Sphere)



COMPONENTS

V, S, M



DURATION

Concentration,
up to 10 minutes

For the duration, you can sense the presence and location of poisons, poisonous creatures, and diseases within 30 feet of you. You also identify the kind of poison, poisonous creature, or disease in each case.

The spell can penetrate most barriers, but it is blocked by 1 foot of stone, 1 inch of common metal, a thin sheet of lead, or 3 feet of wood or dirt.

MATERIAL COMPONENTS

A yew leaf.

CLERIC | DRUID | PALADIN | RANGER

DETECT MAGIC

1ST LEVEL DIVINATION (RITUAL)



CASTING TIME

1 Action



RANGE

Self
(30-Foot-Radius Sphere)



COMPONENTS

V, S



DURATION

Concentration,
up to 10 minutes

For the duration, you sense the presence of magic within 30 feet of you. If you sense magic in this way, you can use your action to see a faint aura around any visible creature or object in the area that bears magic, and you learn its school of magic, if any.

The spell can penetrate most barriers, but it is blocked by 1 foot of stone, 1 inch of common metal, a thin sheet of lead, or 3 feet of wood or dirt.

BARD | CLERIC | DRUID | PALADIN | RANGER | SORCERER | WIZARD

DIVINE FAVOR

1ST LEVEL EVOCATION



CASTING TIME

1 Bonus Action



RANGE

Self



COMPONENTS

V, S



DURATION

Concentration,
up to 1 minute

Your prayer empowers you with divine radiance. Until the spell ends, your weapon attacks deal an extra 1d4 radiant damage on a hit.

PALADIN

DISGUISE SELF

1ST LEVEL ILLUSION



CASTING TIME

1 Action



RANGE

Self



COMPONENTS

V, S



DURATION

1 Hour

You make yourself — including your clothing, armor, weapons, and other belongings on your person — look different until the spell ends or until you use your action to dismiss it. You can seem 1 foot shorter or taller and can appear thin, fat, or in between. You can't change your body type, so you must adopt a form that has the same basic arrangement of limbs. Otherwise, the extent of the illusion is up to you.

The changes wrought by this spell fail to hold up to physical inspection. For example, if you use this spell to add a hat to your outfit, objects pass through the hat, and anyone who touches it would feel nothing or would feel your head and hair. If you use this spell to appear thinner than you are, the hand of someone who reaches out to touch you would bump into you while it was seemingly still in midair.

To discern that you are disguised, a creature can use its action to inspect your appearance and must succeed on an Intelligence (Investigation) check against your spell save DC.

BARD | SORCERER | WIZARD



ENTANGLE

LEVEL 1
CONJURATION

1 ACTION 90' V, S C. 1 MIN

ART: CRAIG YAMAMOTO THE DECK OF MANY © HIT POINT PRESS INC. 2019



EXPEDITIOUS RETREAT

LEVEL 1
TRANSMUTATION

1 BONUS SELF V, S C. 10 MINS

ART: MENG HER THE DECK OF MANY © HIT POINT PRESS INC. 2019



FAERIE FIRE

LEVEL 1
EVOCATION

1 ACTION 60' V C. 1 MIN

ART: JOSHUA HERRON THE DECK OF MANY © HIT POINT PRESS INC. 2019



FALSE LIFE

LEVEL 1
NECROMANCY

1 ACTION SELF V, S, M 1 HR

ART: MENG HER THE DECK OF MANY © HIT POINT PRESS INC. 2019

EXPEDITIOUS RETREAT

1ST LEVEL TRANSMUTATION



CASTING TIME

1 Bonus Action



RANGE

Self



COMPONENTS

V, S



DURATION

Concentration,
up to 10 minutes

This spell allows you to move at an incredible pace. When you cast this spell, and then as a bonus action on each of your turns until the spell ends, you can take the Dash action.

SORCERER | WARLOCK | WIZARD

ENTANGLE

1ST LEVEL CONJURATION



CASTING TIME

1 Action



RANGE

90 Feet
(20-Foot Square)



COMPONENTS

V, S



DURATION

Concentration,
up to 1 minute

Grasping weeds and vines sprout from the ground in a 20-foot square starting from a point within range. For the duration, these plants turn the ground in the area into difficult terrain.

A creature in the area when you cast the spell must succeed on a Strength saving throw or be restrained by the entangling plants until the spell ends. A creature restrained by the plants can use its action to make a Strength check against your spell save DC. On a success, it frees itself.

When the spell ends, the conjured plants wilt away.

DRUID

FALSE LIFE

1ST LEVEL NECROMANCY



CASTING TIME

1 Action



RANGE

Self



COMPONENTS

V, S, M



DURATION

1 Hour

Bolstering yourself with a necromantic facsimile of life, you gain 1d4 + 4 temporary hit points for the duration.

At Higher Levels. When you cast this spell using a spell slot of 2nd level or higher, you gain 5 additional temporary hit points for each slot level above 1st.

MATERIAL COMPONENTS

A small amount of alcohol or distilled spirits.

SORCERER | WIZARD

FAERIE FIRE

1ST LEVEL EVOCATION



CASTING TIME

1 Action



RANGE

60 Feet
(20-Foot Cube)



COMPONENTS

V



DURATION

Concentration,
up to 1 minute

Each object in a 20-foot cube within range is outlined in blue, green, or violet light (your choice). Any creature in the area when the spell is cast is also outlined in light if it fails a Dexterity saving throw. For the duration, objects and affected creatures shed dim light in a 10-foot radius.

Any attack roll against an affected creature or object has advantage if the attacker can see it, and the affected creature or object can't benefit from being invisible.

BARD | DRUID



FEATHER FALL

LEVEL 1
TRANSMUTATION

1 REACT 60' V, M 1 MIN

ART: CRAIG YAMAMOTO

THE DECK OF MANY © HIT POINT PRESS INC. 2019



FIND FAMILIAR

LEVEL 1
CONJURATION (R)

1 HR 10' V, S, M INSTANT

ART: MENG HER

THE DECK OF MANY © HIT POINT PRESS INC. 2019



FLOATING DISK

LEVEL 1
CONJURATION (R)

1 ACTION 30' V, S, M 1 HR

ART: CRAIG YAMAMOTO

THE DECK OF MANY © HIT POINT PRESS INC. 2019



FOG CLOUD

LEVEL 1
CONJURATION

1 ACTION 120' V, S C. 1 HR

ART: GIOVANNI BARROTU

THE DECK OF MANY © HIT POINT PRESS INC. 2019

FIND FAMILIAR

1ST LEVEL CONJURATION (RITUAL)



CASTING TIME

1 Hour



RANGE

10 Feet



COMPONENTS

V, S, M



DURATION

Instantaneous

You gain the service of a familiar, a spirit that takes an animal form you choose: **bat, cat, crab, frog (toad), hawk, lizard, octopus, owl, poisonous snake, fish (quipper), rat, raven, sea horse, spider, or weasel.** Appearing in an unoccupied space within range, the familiar has the statistics of the chosen form, though it is a celestial, fey, or fiend (your choice) instead of a beast.

Your familiar acts independently of you, but it always obeys your commands. In combat, it rolls its own initiative and acts on its own turn. A familiar can't attack, but it can take other actions as normal. When the familiar drops to 0 hit points, it disappears, leaving behind no physical form. It reappears after you cast this spell again.

While your familiar is within 100 feet of you, you can communicate with it telepathically. Additionally, as an action, you can see through your familiar's eyes and hear what it hears until the start of your next turn, gaining the benefits of any special senses that the familiar has. During this time, you are deaf and blind with regard to your own senses.

As an action, you can temporarily dismiss your familiar. It disappears into a pocket dimension where it awaits your summons. Alternatively, you can dismiss it forever. As an action while it is temporarily dismissed, you can cause it to reappear in any unoccupied space within 30 feet of you.

You can't have more than one familiar at a time. If you cast this spell while you already have a familiar, you instead cause it to adopt a new form. Choose one of the forms from the above list. Your familiar transforms into the chosen creature.

Finally, when you cast a spell with a range of touch, your familiar can deliver the spell as if it had cast the spell. Your familiar must be within 100 feet of you, and it must use its reaction to deliver the spell when you cast it. If the spell requires an attack roll, you use your attack modifier for the roll.

MATERIAL COMPONENTS

10 gp worth of charcoal, incense, and herbs that must be consumed by fire in a brass brazier.

WIZARD

FEATHER FALL

1ST LEVEL TRANSMUTATION



CASTING TIME

1 Reaction



RANGE

60 Feet



COMPONENTS

V, M



DURATION

1 Minute

Choose up to five falling creatures within range.

A falling creature's rate of descent slows to 60 feet per round until the spell ends. If the creature lands before the spell ends, it takes no falling damage and can land on its feet, and the spell ends for that creature.

CASTING TIME

1 reaction, which you take when you or a creature within 60 feet of you falls.

MATERIAL COMPONENTS

A small feather or piece of down.

BARD | SORCERER | WIZARD

FOG CLOUD

1ST LEVEL CONJURATION



CASTING TIME

1 Action



RANGE

120 Feet
(20-Foot-Radius Sphere)



COMPONENTS

V, S



DURATION

Concentration,
up to 1 hour

You create a 20-foot-radius sphere of fog centered on a point within range. The sphere spreads around corners, and its area is heavily obscured. It lasts for the duration or until a wind of moderate or greater speed (at least 10 miles per hour) disperses it.

At Higher Levels. When you cast this spell using a spell slot of 2nd level or higher, the radius of the fog increases by 20 feet for each slot level above 1st.

DRUID | RANGER | SORCERER | WIZARD

FLOATING DISK

1ST LEVEL CONJURATION (RITUAL)



CASTING TIME

1 Action



RANGE

30 Feet



COMPONENTS

V, S, M



DURATION

1 Hour

This spell creates a circular, horizontal plane of force, 3 feet in diameter and 1 inch thick, that floats 3 feet above the ground in an unoccupied space of your choice that you can see within range. The disk remains for the duration, and can hold up to 500 pounds. If more weight is placed on it, the spell ends, and everything on the disk falls to the ground.

The disk is immobile while you are within 20 feet of it. If you move more than 20 feet away from it, the disk follows you so that it remains within 20 feet of you. It can move across uneven terrain, up or down stairs, slopes and the like, but it can't cross an elevation change of 10 feet or more. For example, the disk can't move across a 10-foot-deep pit, nor could it leave such a pit if it was created at the bottom.

If you move more than 100 feet from the disk (typically because it can't move around an obstacle to follow you), the spell ends.

MATERIAL COMPONENTS

A drop of mercury.

WIZARD

LICENCE

The terms of the Open Gaming License Version 1.0a are as follows:

OPEN GAME LICENSE Version 1.0a

The following text is the property of Wizards of the Coast, Inc. and is Copyright 2000 Wizards of the Coast, Inc ("Wizards"). All Rights Reserved. 1. Definitions: (a) "Contributors" means the copyright and/or trademark owners who have contributed Open Game Content; (b) "Derivative Material" means copyrighted material including derivative works and translations (including into other computer languages), potation, modification, correction, addition, extension, upgrade, improvement, compilation, abridgment or other form in which an existing work may be recast, transformed or adapted; (c) "Distribute" means to reproduce, license, rent, lease, sell, broadcast, publicly display, transmit or otherwise distribute; (d) "Open Game Content" means the game mechanic and includes the methods, procedures, processes and routines to the extent such content does not embody the Product Identity and is an enhancement over the prior art and any additional content clearly identified as Open Game Content by the Contributor, and means any work covered by this License, including translations and derivative works under copyright law, but specifically excludes Product Identity. (e) "Product Identity" means product and product line names, logos and identifying marks including trade dress; artifacts; creatures characters; stories, storylines, plots, thematic elements, dialogue, incidents, language, artwork, symbols, designs, depictions, likenesses, formats, poses, concepts, themes and graphic, photographic and other visual or audio representations; names and descriptions of characters, spells, enchantments, personalities, teams, personas, likenesses and special abilities; places, locations, environments, creatures, equipment, magical or supernatural abilities or effects, logos, symbols, or graphic designs; and any other trademark or registered trademark clearly identified as Product identity by the owner of the Product Identity, and which specifically excludes the Open Game Content; (f) "Trademark" means the logos, names, mark, sign, motto, designs that are used by a Contributor to identify itself or its products or the associated products contributed to the Open Game License by the Contributor (g) "Use", "Used" or "Using" means to use, Distribute, copy, edit, format, modify, translate and otherwise create Derivative Material of Open Game

Content. (h) "You" Not for resale. Permission granted to print or photocopy this document for personal use only. System Reference Document 5.1 2 or "Your" means the licensee in terms of this agreement.

2. The License: This License applies to any Open Game Content that contains a notice indicating that the Open Game Content may only be Used under and in terms of this License. You must affix such a notice to any Open Game Content that you Use. No terms may be added to or subtracted from this License except as described by the License itself. No other terms or conditions may be applied to any Open Game Content distributed using this License.

3. Offer and Acceptance: By Using the Open Game Content You indicate Your acceptance of the terms of this License.

4. Grant and Consideration: In consideration for agreeing to use this License, the Contributors grant You a perpetual, worldwide, royalty-free, nonexclusive license with the exact terms of this License to Use, the Open Game Content.

5. Representation of Authority to Contribute: If You are contributing original material as Open Game Content, You represent that Your Contributions are Your original creation and/or You have sufficient rights to grant the rights conveyed by this License.

6. Notice of License Copyright: You must update the COPYRIGHT NOTICE portion of this License to include the exact text of the COPYRIGHT NOTICE of any Open Game Content You are copying, modifying or distributing, and You must add the title, the copyright date, and the copyright holder's name to the COPYRIGHT NOTICE of any original Open Game Content you Distribute.

7. Use of Product Identity: You agree not to Use any Product Identity, including as an indication as to compatibility, except as expressly licensed in another, independent Agreement with the owner of each element of that Product Identity. You agree not to indicate compatibility or co-adaptability with any Trademark or Registered Trademark in conjunction with a work containing Open Game Content except as expressly licensed in another, independent Agreement with the owner of such Trademark or Registered Trademark. The use of any Product

Identity in Open Game Content does not constitute a challenge to the ownership of that Product Identity. The owner of any Product Identity used in Open Game Content shall retain all rights, title and interest in and to that Product Identity.

8. Identification: If you distribute Open Game Content You must clearly indicate which portions of the work that you are distributing are Open Game Content.

9. Updating the License: Wizards or its designated Agents may publish updated versions of this License. You may use any authorized version of this License to copy, modify and distribute any Open Game Content originally distributed under any version of this License.

10. Copy of this License: You MUST include a copy of this License with every copy of the Open Game Content You Distribute.

11. Use of Contributor Credits: You may not market or advertise the Open Game Content using the name of any Contributor unless You have written permission from the Contributor to do so.

12. Inability to Comply: If it is impossible for You to comply with any of the terms of this License with respect to some or all of the Open Game Content due to statute, judicial order, or governmental regulation then You may not Use any Open Game Material so affected.

13. Termination: This License will terminate automatically if You fail to comply with all terms herein and fail to cure such breach within 30 days of becoming aware of the breach. All sublicenses shall survive the termination of this License.

14. Reformation: If any provision of this License is held to be unenforceable, such provision shall be reformed only to the extent necessary to make it enforceable.

15. COPYRIGHT NOTICE Open Game License v 1.0a Copyright 2000, Wizards of the Coast, LLC.

System Reference Document 5.1 Copyright 2016, Wizards of the Coast, Inc.; Authors Mike Mearls, Jeremy Crawford, Chris Perkins, Rodney Thompson, Peter Lee, James Wyatt, Robert J. Schwalb, Bruce R. Cordell, Chris Sims, and Steve Townshend, based on original material by E. Gary Gygax and Dave Arneson.

END OF LICENSE

PRODUCT IDENTITY

The following items are designated Product Identity, as defined in Section 1(e) of the Open Gaming License Version 1.0a and are subject to the conditions set forth in Section 7 of the Open Gaming Licence, and are not Open Content:

All artwork, including but not limited to, works created by Liam Bertelsen, Meng Her, Dante Tumminello, Kohl Alban, Ana Rojas, Josh Grinlinton, Craig Yamamoto, Joshua Herron, Ben Ravid, Giovanni Barrotou, Mimi Chiu, Stefan Grambart

Hit Point Press Inc. branding, including but not limited to, logos, trademarks, graphic design, layouts and identifying marks,

The Deck of Many branding, including but not limited to logos, trademarks, graphic design, layouts and identifying marks,

The Deck of Many Animated Spells branding, including but not limited to, logos, trademarks, graphic design, layouts and identifying marks,

Graphic design elements of the Deck of Many, including but not limited to, layouts, box design, graphics, and iconography,

All text created by Hit Point Press Inc. not found in the Open Gaming License Version 1.0a, System Reference Document 5.1 found at the internet link http://media.wizards.com/2016/downloads/DND/SRD-OGL_V5.1.pdf,

Promotional materials for the Deck of Many, including but not limited to, video, animation, and social media content,

All merchandise associated with the Deck of Many, including but not limited to, enamel pins, deck boxes, books, figurines, card names, statistics, abilities, spells, and all information found on all cards.

OPEN GAMING CONTENT

All content from the System Reference Document 5.1 is Open Game Content as described in Section 1(d) of the License. No portion of this work other than the material designated as Open Game Content may be reproduced in any form without permission.