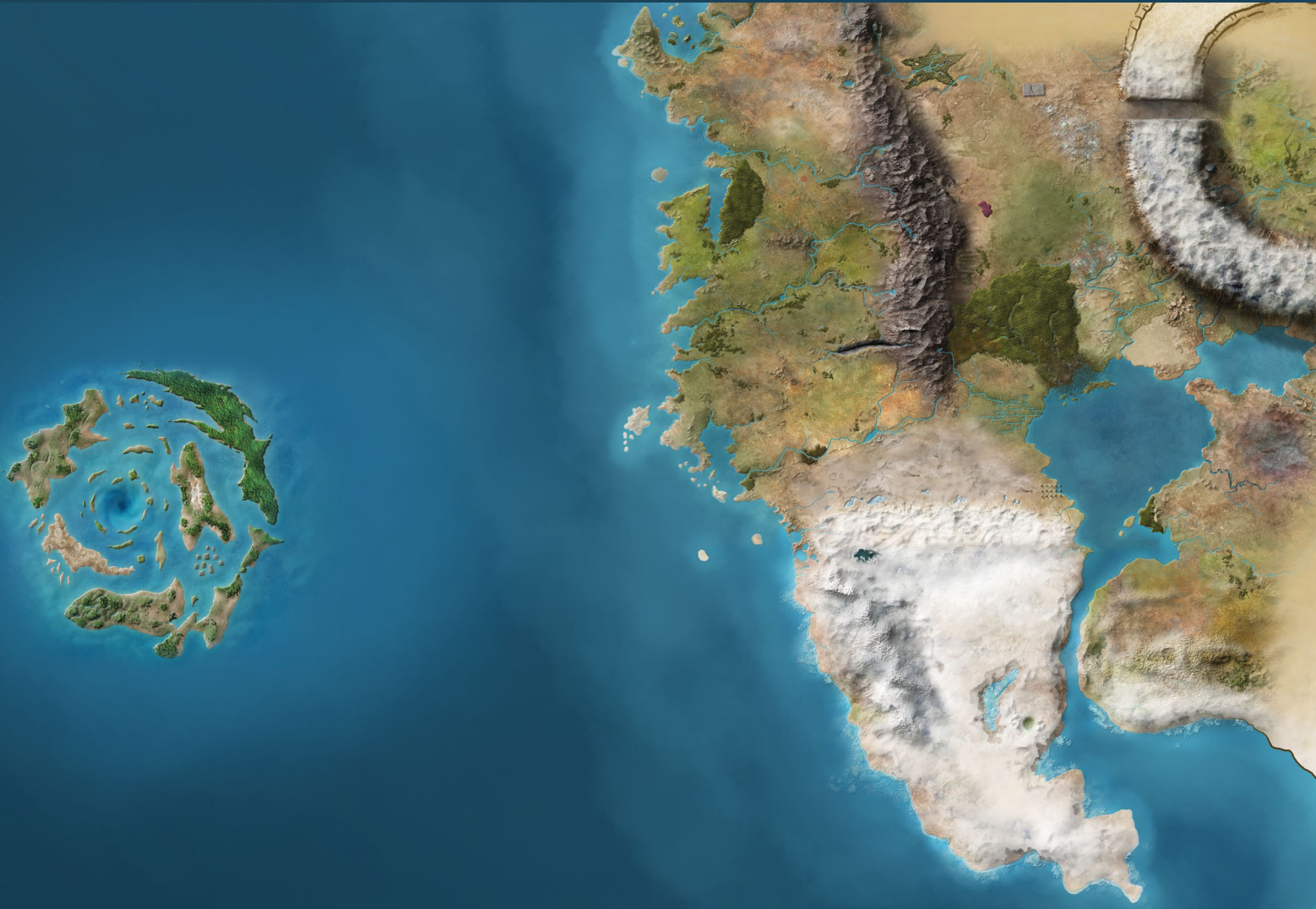


NUMENÉRA™



MAPS OF THE NINTH WORLD 2

BY MONTE COOK

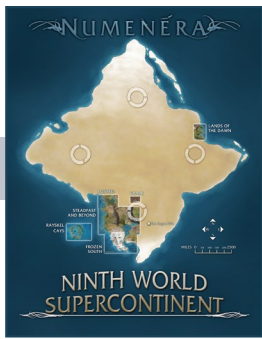


TABLE OF CONTENTS

Designer
Monte Cook

Graphic Designer
Bear Weiter

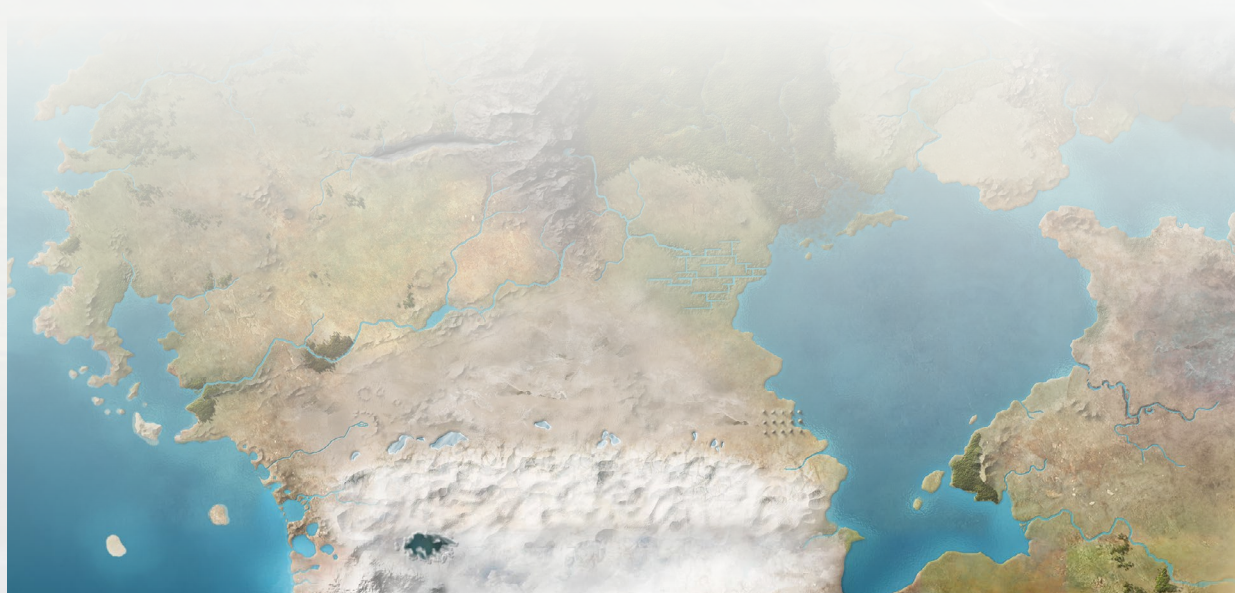
Cartographer
Christopher West

Map	Labeled	Unlabeled
Ninth World Supercontinent	3	4
The Wyr Lowlands	5	6
The Dark Hills	7	8
Savashram Wastes	9	10
Thaemor Foothills	11	12
Izaltu's Needle	13	14
The Violet Vale	15	16
The Frozen South	17	18
Seraph Tempest	19	20
The Invisible Vale	21	22
Lostrei	23	24
Vralk	25	26
A Vallation	27	28
Errow Cascade	29	30
Rayskel Cays	31	32
Lands of the Dawn	33	34
Kasmus Gol	35	36



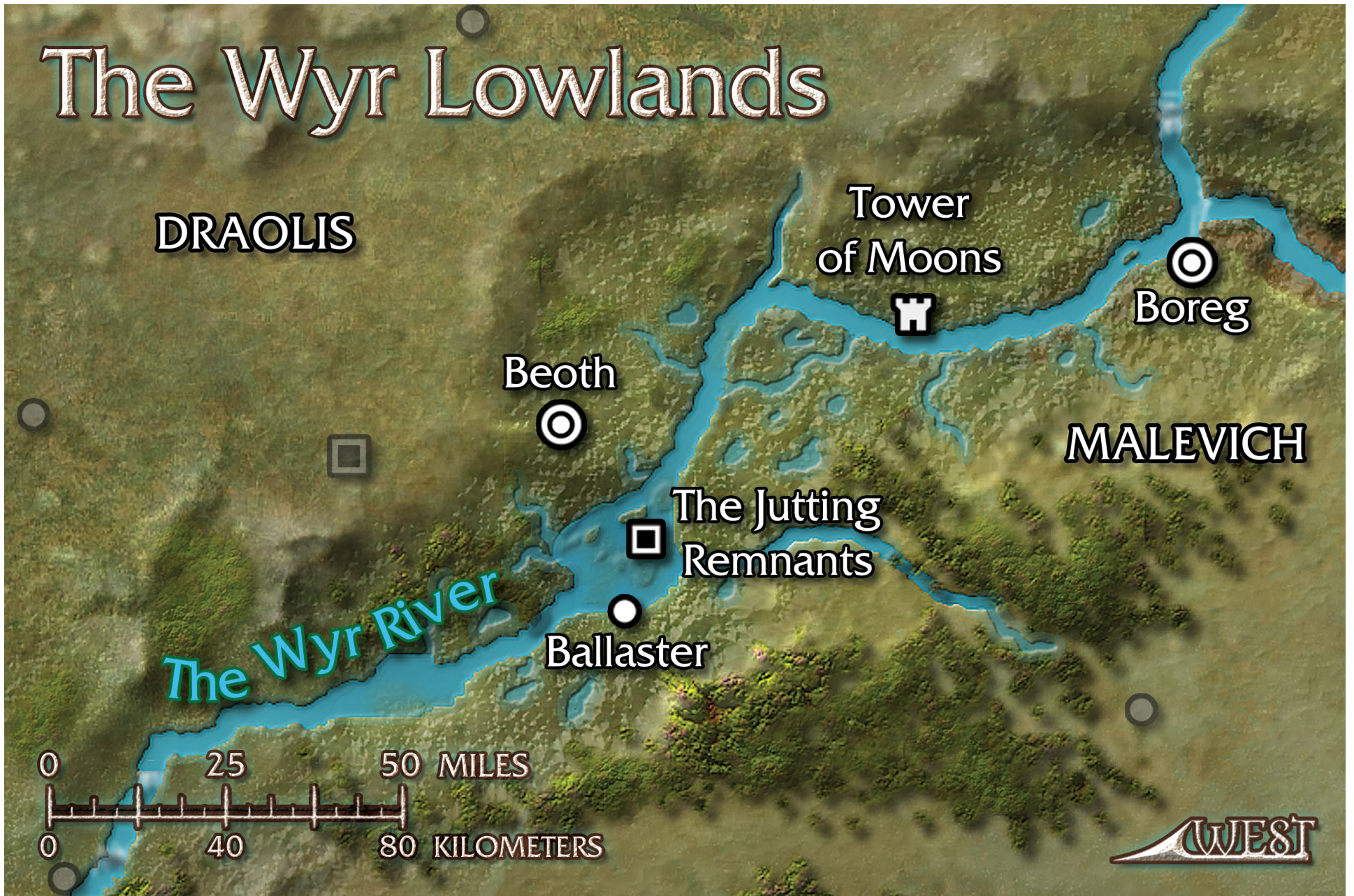
© 2015 Monte Cook Games, LLC

NUMENERA and its logo are trademarks of Monte Cook Games, LLC in the U.S.A. and other countries. All Monte Cook Games characters and character names, and the distinctive likenesses thereof, are trademarks of Monte Cook Games, LLC.













Savashram Wastes

THE PYTHARON
EMPIRE



Far Brohn

Canyon of Blades

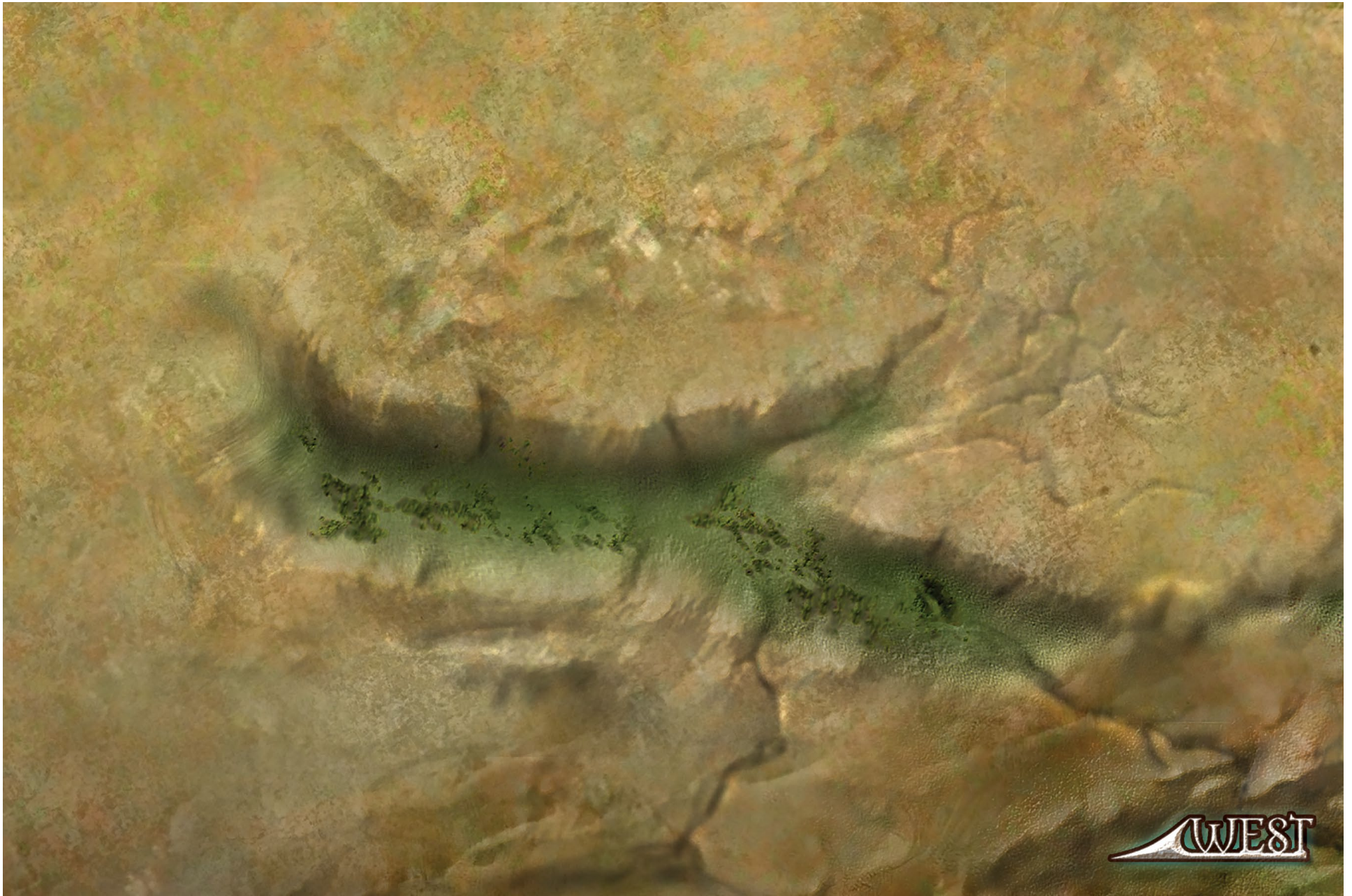
Darke's Tower



● Duhane

10 Miles
16 Kilometers



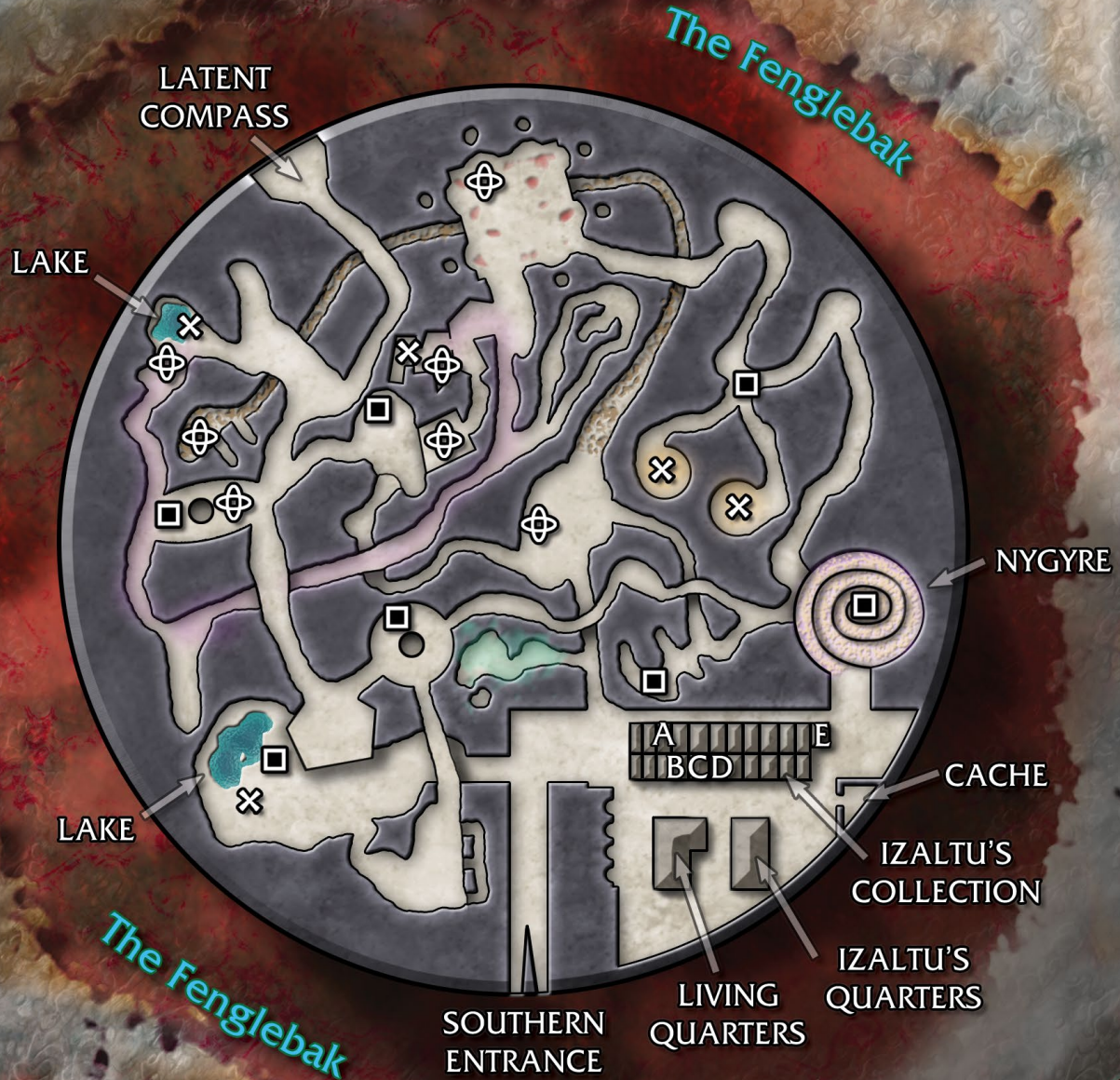






Izaltu's Needle

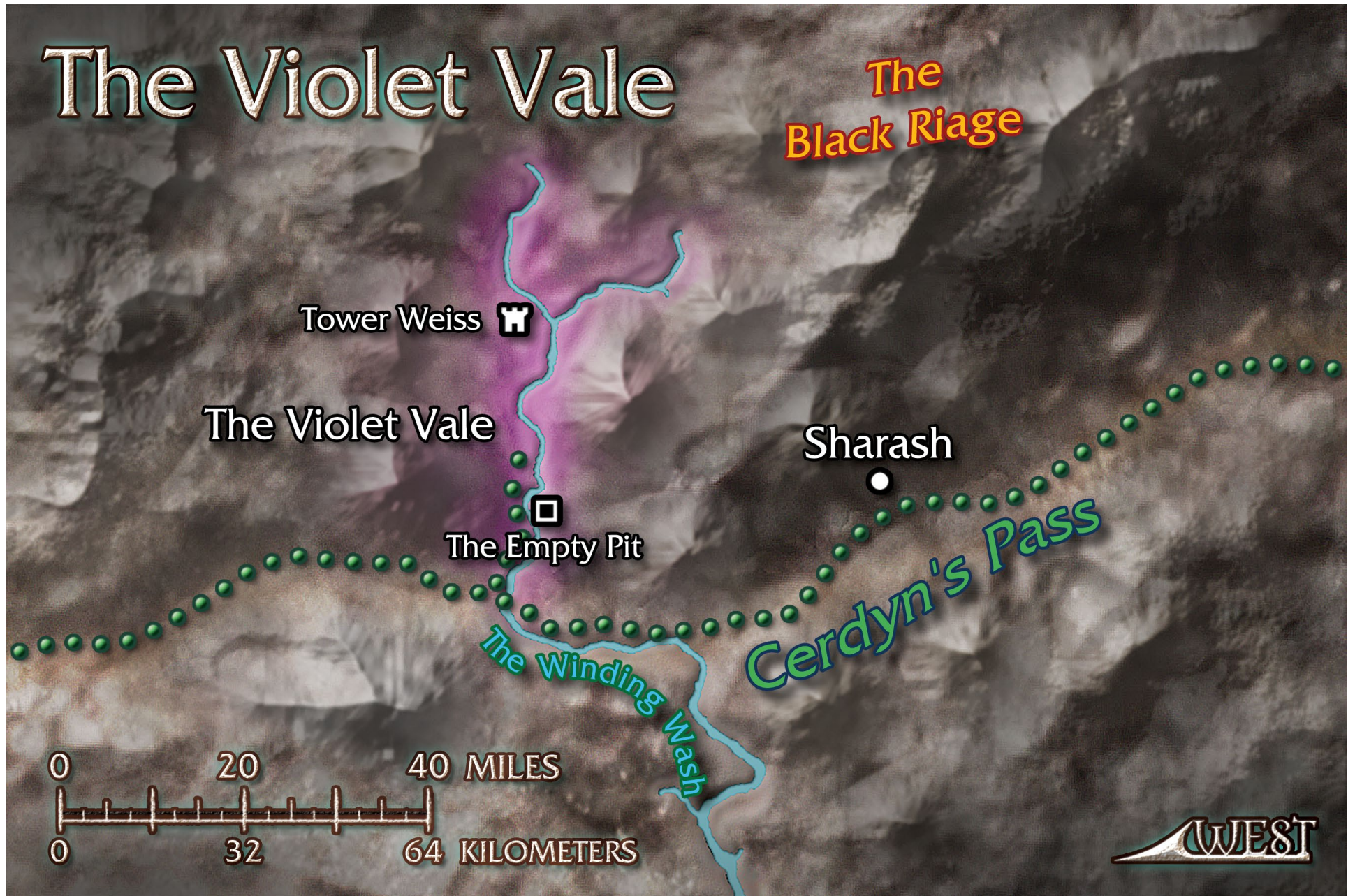
- Ruin or Mystery
- ⊕ Numenera
- × Habitats

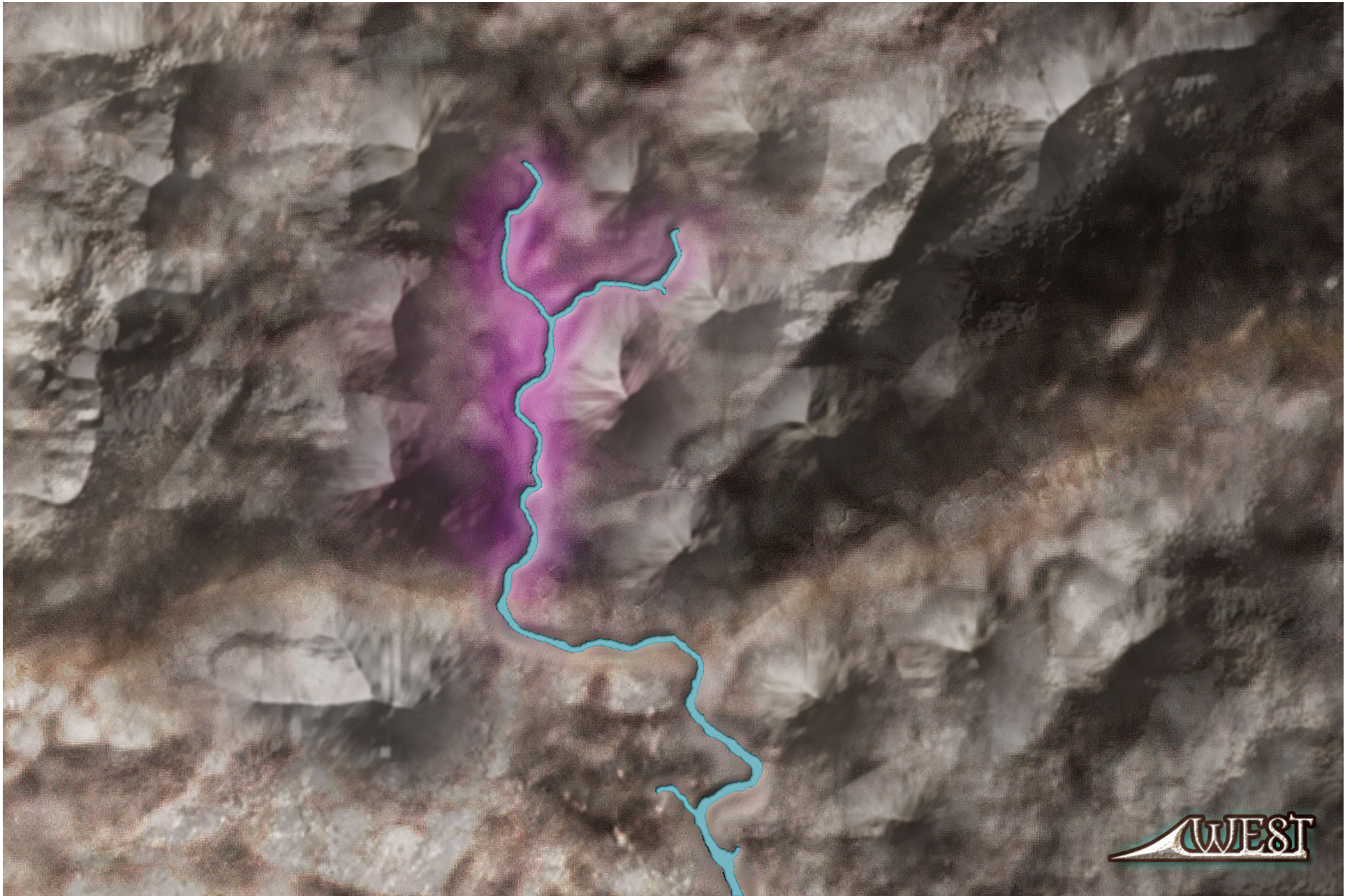


- A Baliachs
- B Polil
- C Roer
- D Elista Guchian
- E Skelt

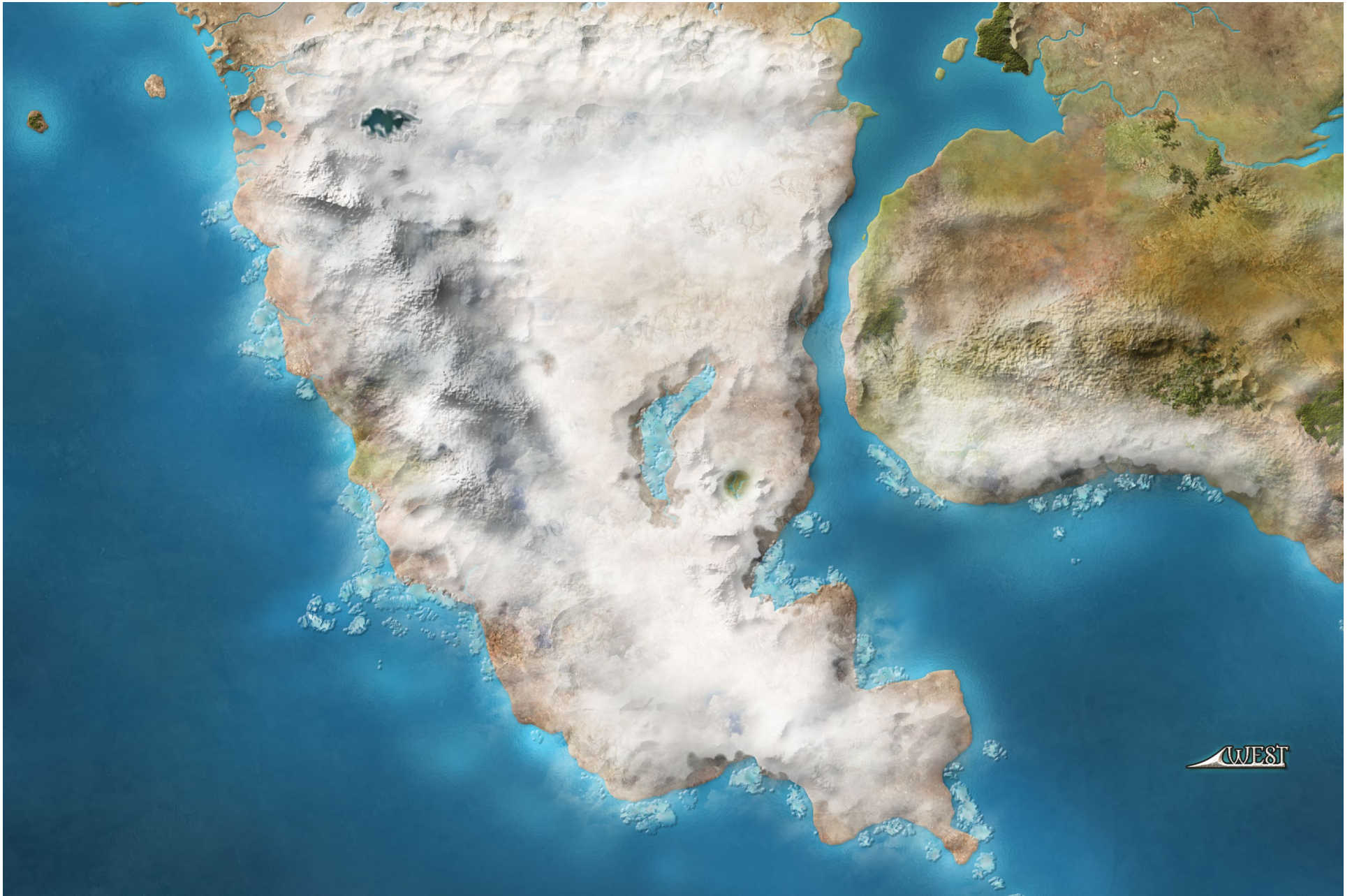






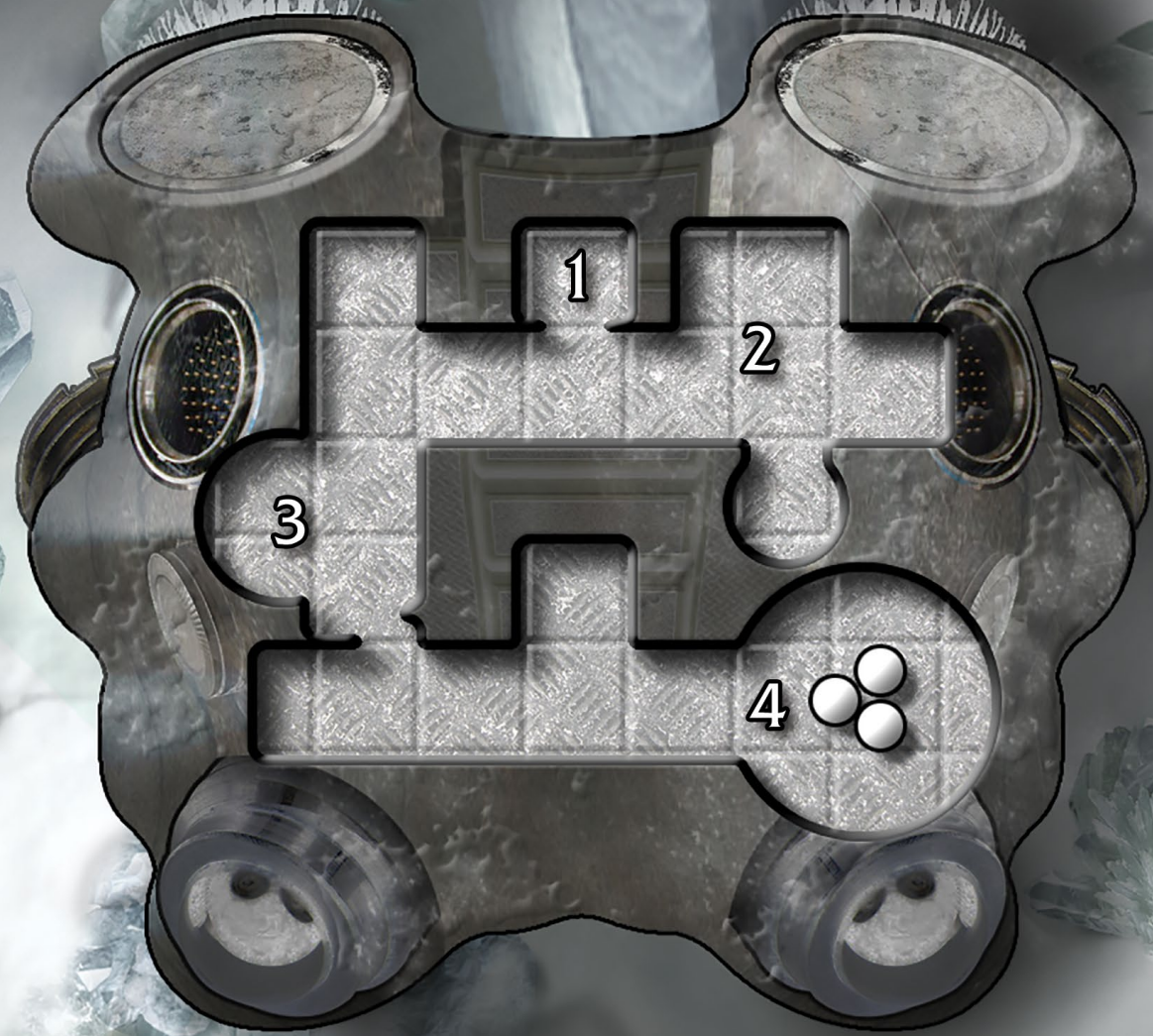
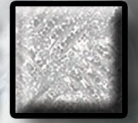






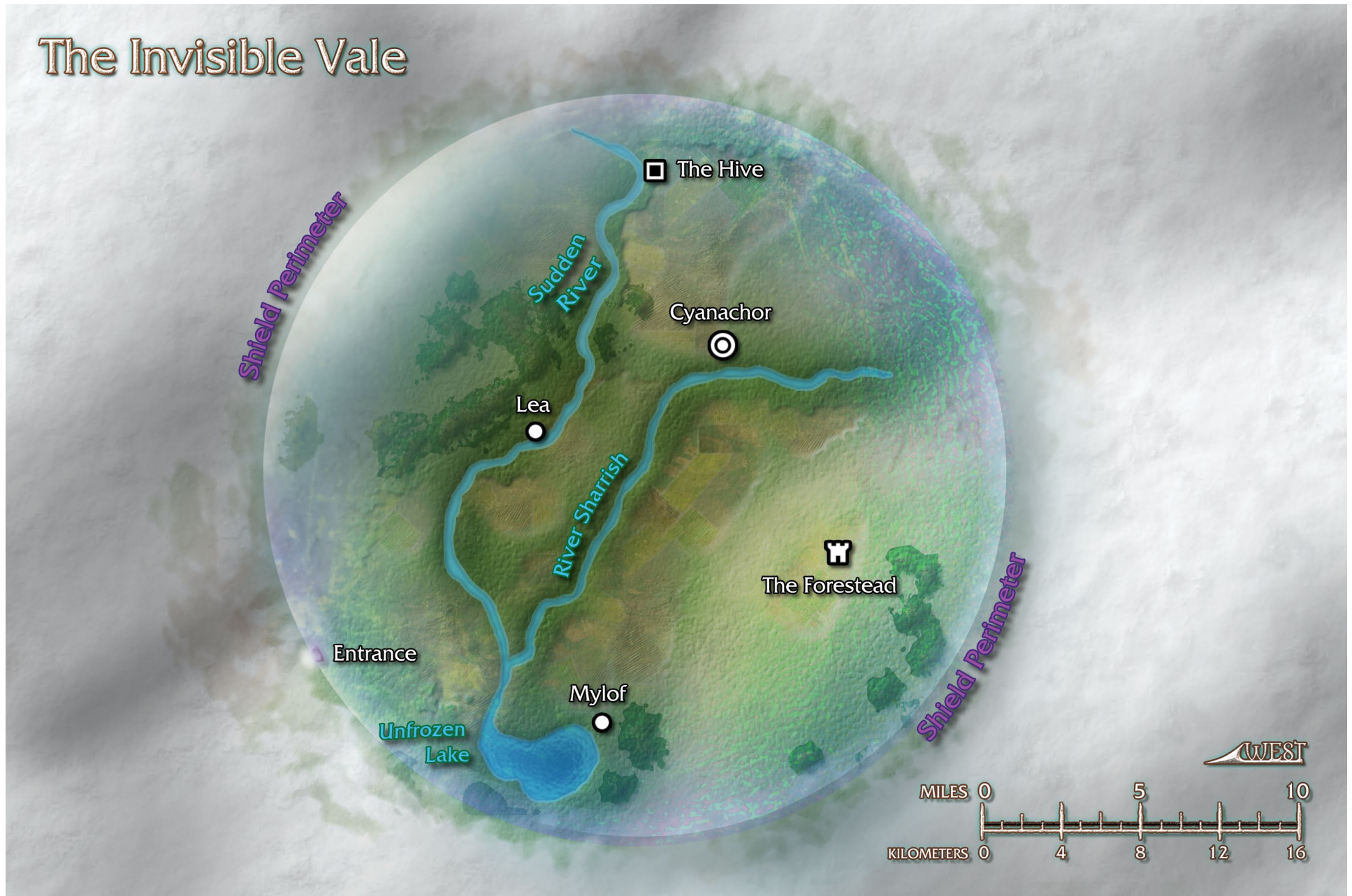
Seraph Tempest

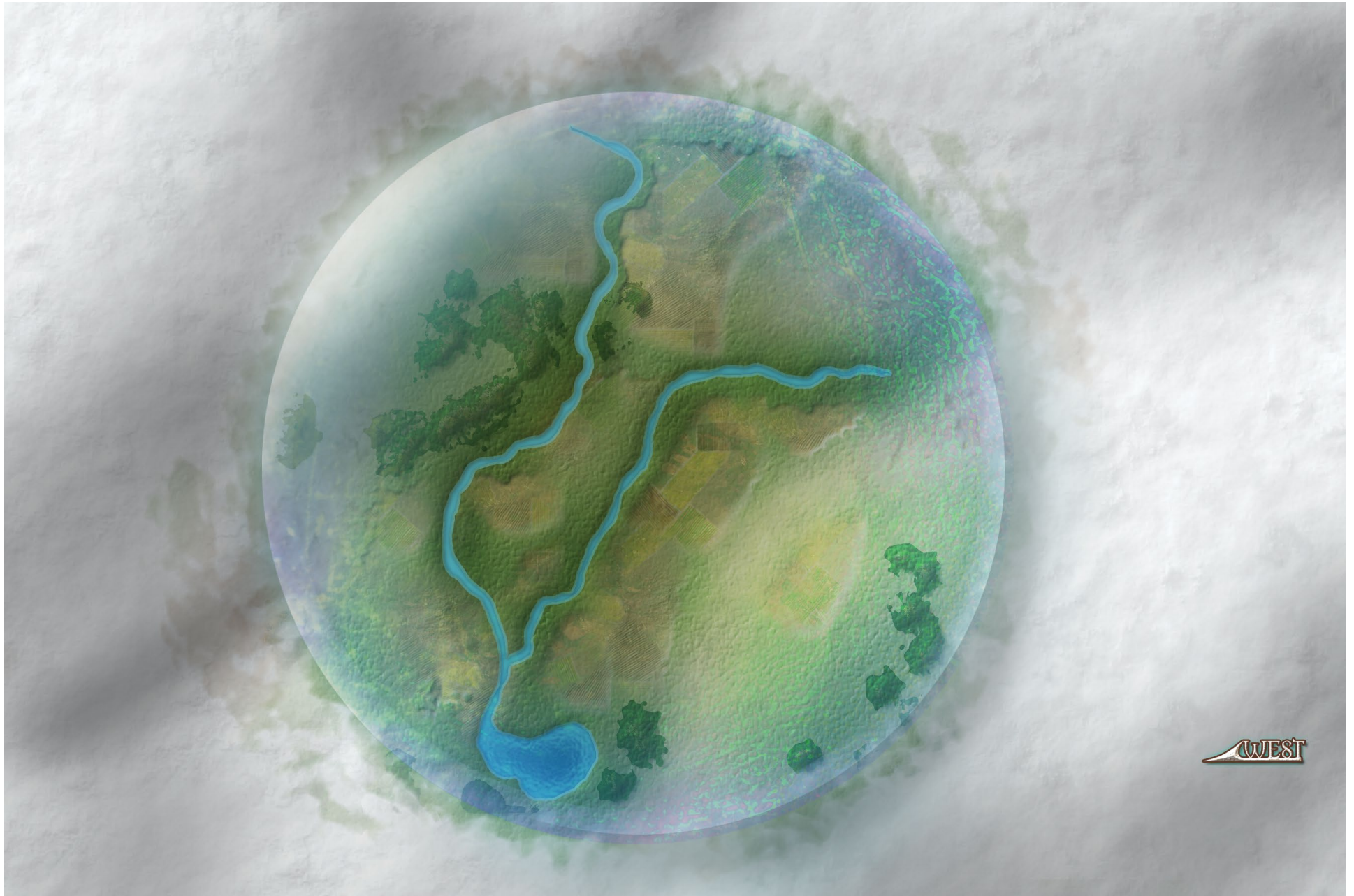
1 square = 10 feet
(3 meters)





The Invisible Vale

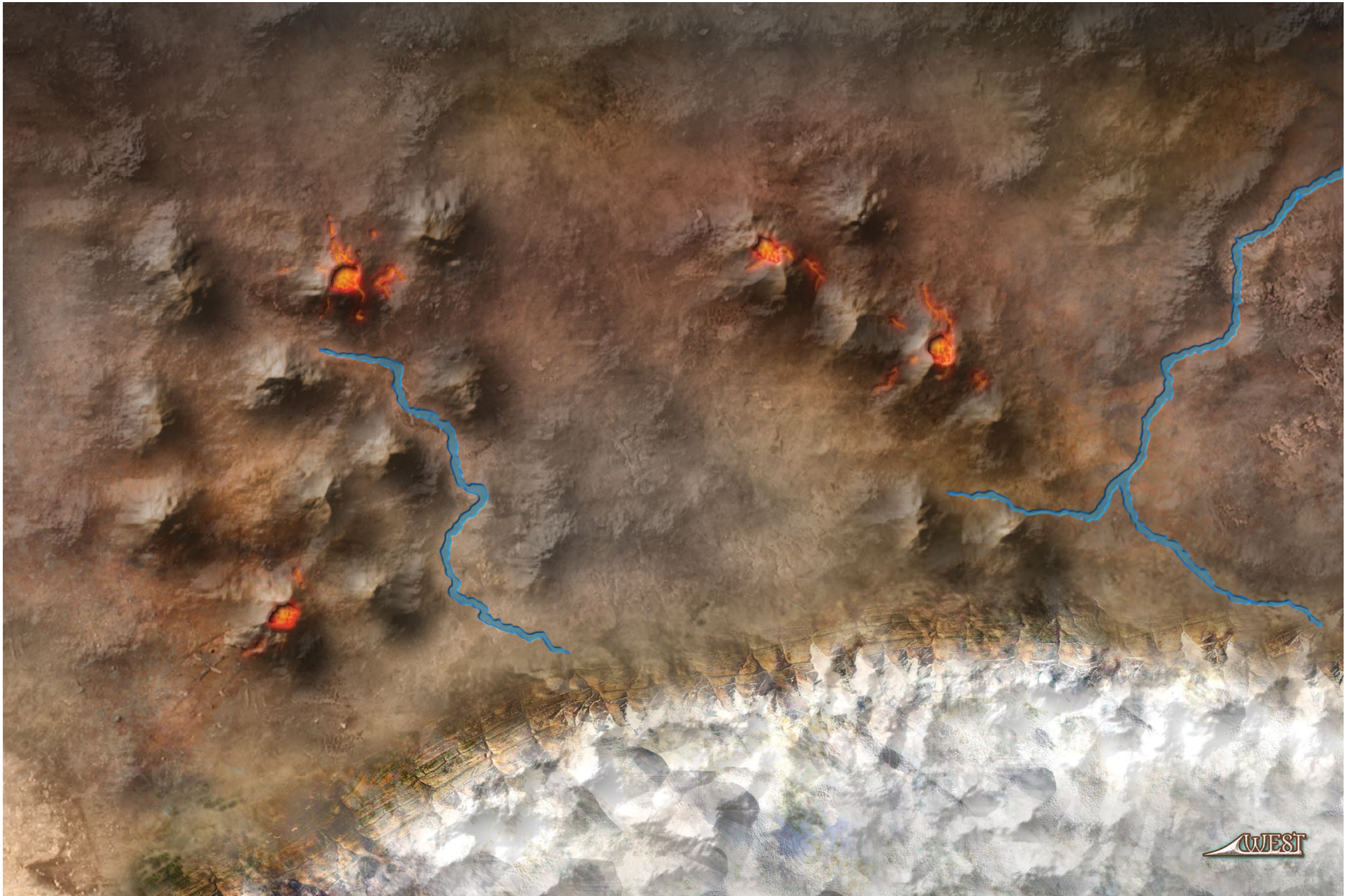


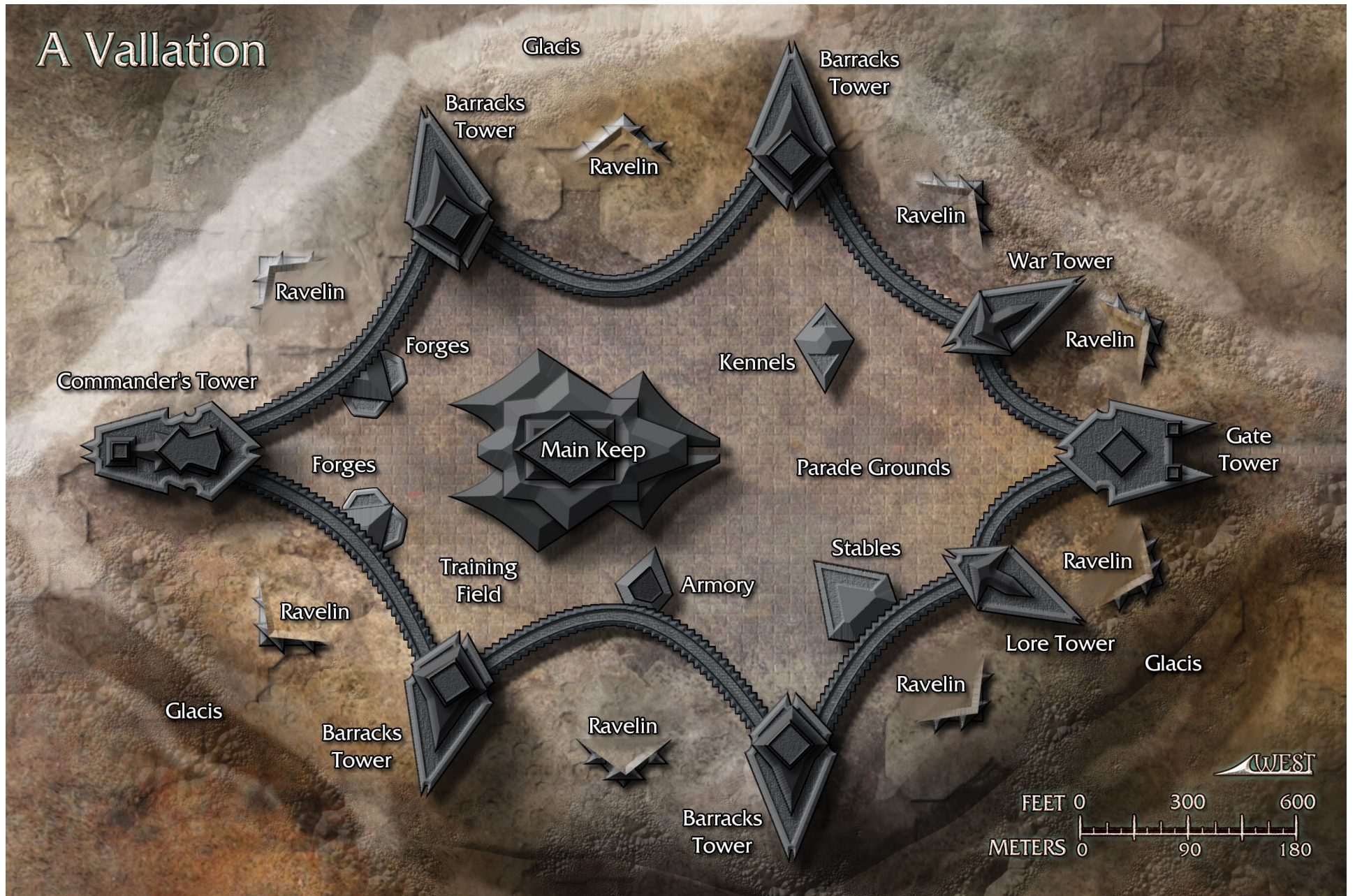




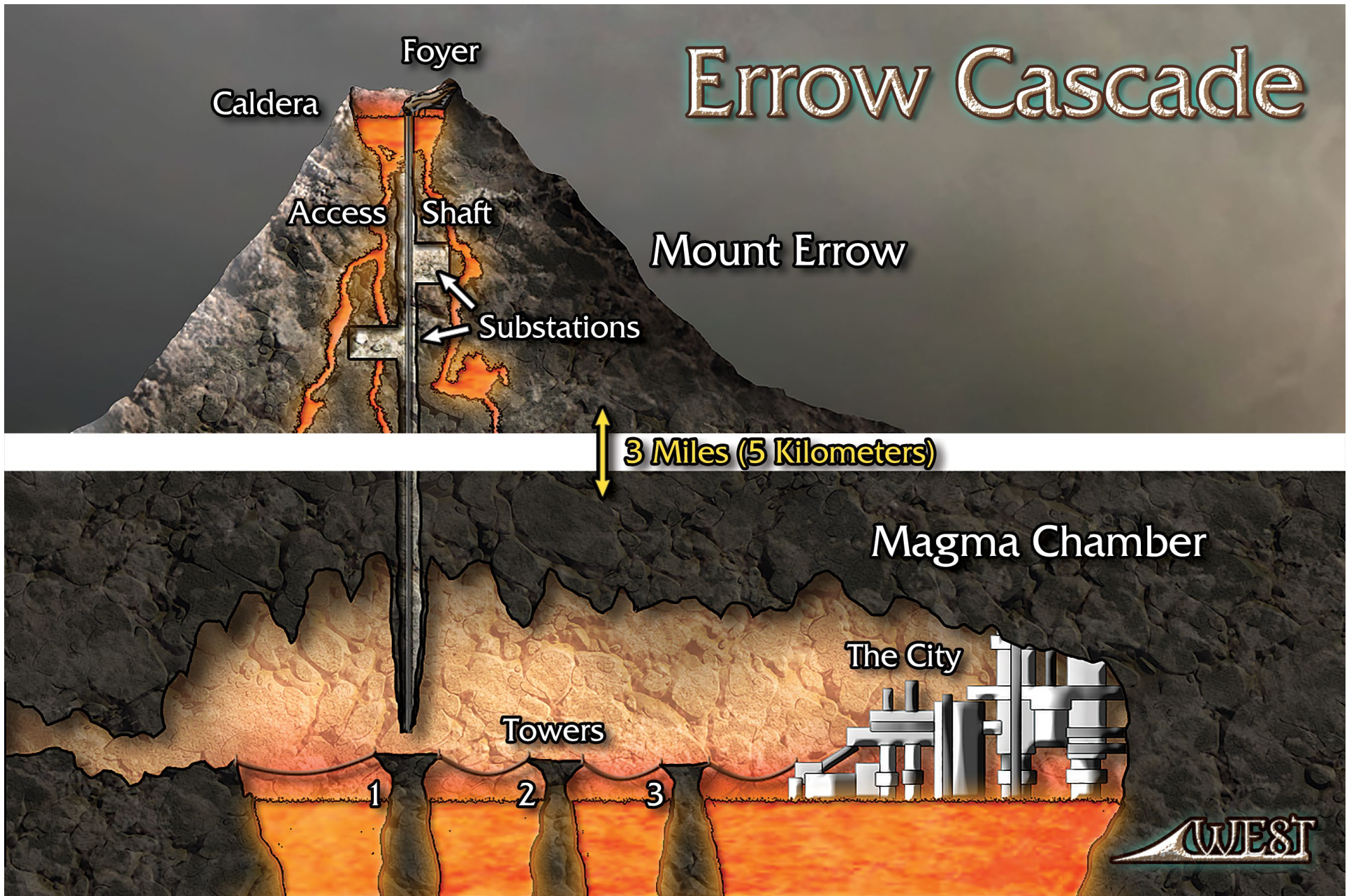


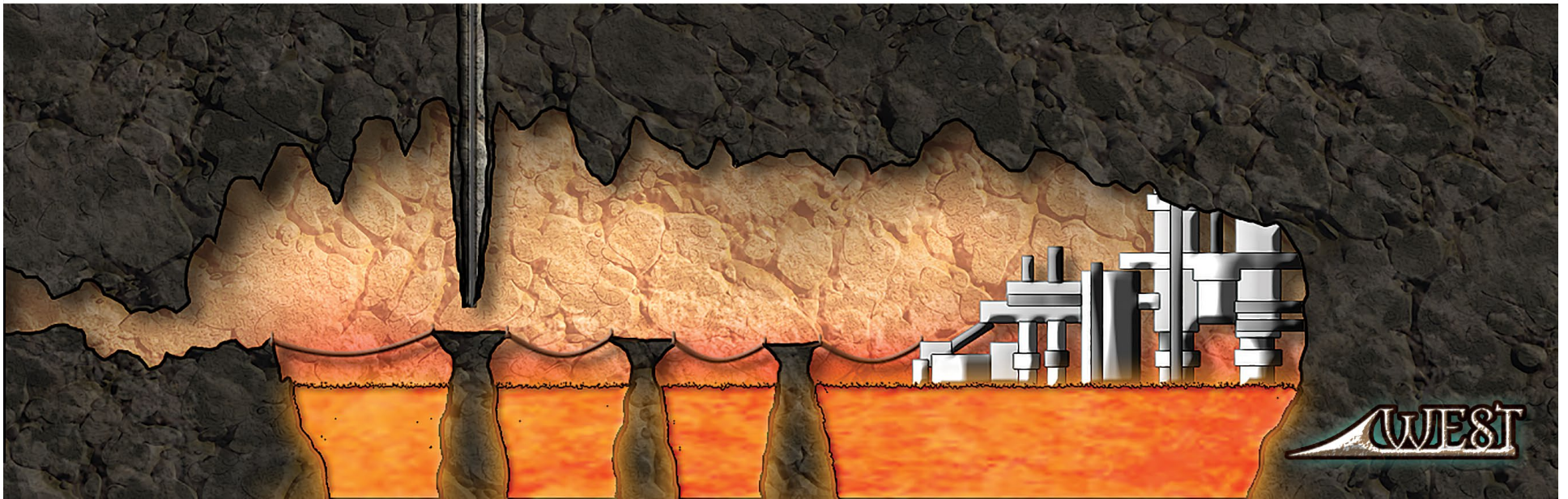
















WEST





Kasmus Gol

SIDE VIEW





WEST

NUMENERA GLIMMERS

Numenera Glimmers are inexpensive PDF-only products that allow us to respond to fans' desires for new material on the fly and let us delve deeper into the Ninth World, covering unusual and specialized topics that might not find a home in a larger publication.

Whether you're looking for new adventures and character options, Ninth World lore and culture, a cache of numenera devices, or just something a little weird, the datasphere has got you covered.



All Numenera Glimmers are also available on [DriveThruRPG](#).

